

**Setting mouse properties in Linux SuSE 10
F1DP108G, F1DP116G, F1DP101M**

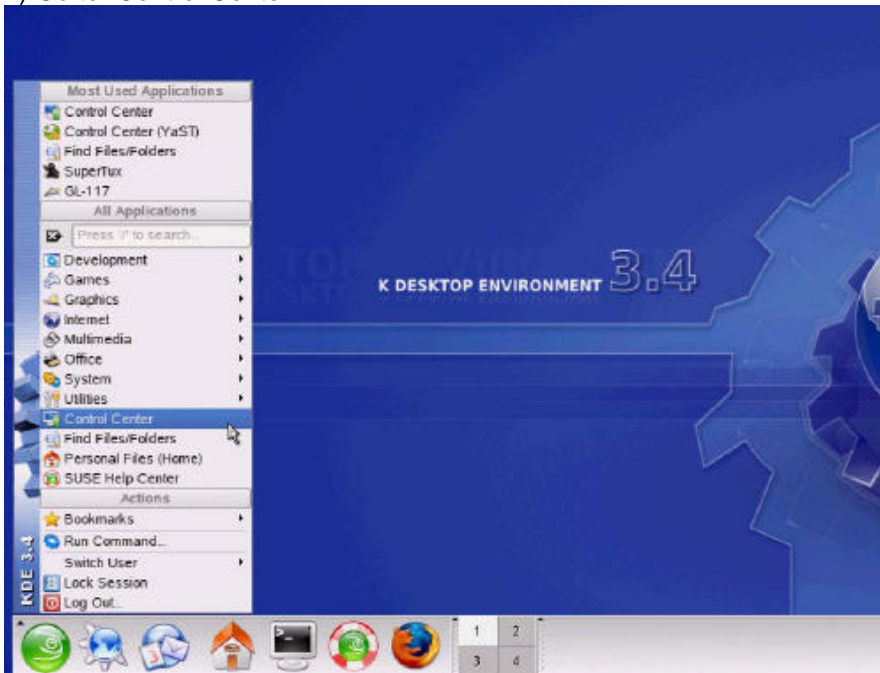
SUMMARY:

This document will explain how to match mouse acceleration and threshold settings in SMB IP KVM switch to the mouse acceleration and threshold in Linux SuSE 10 with KDE and Gnome desktops.

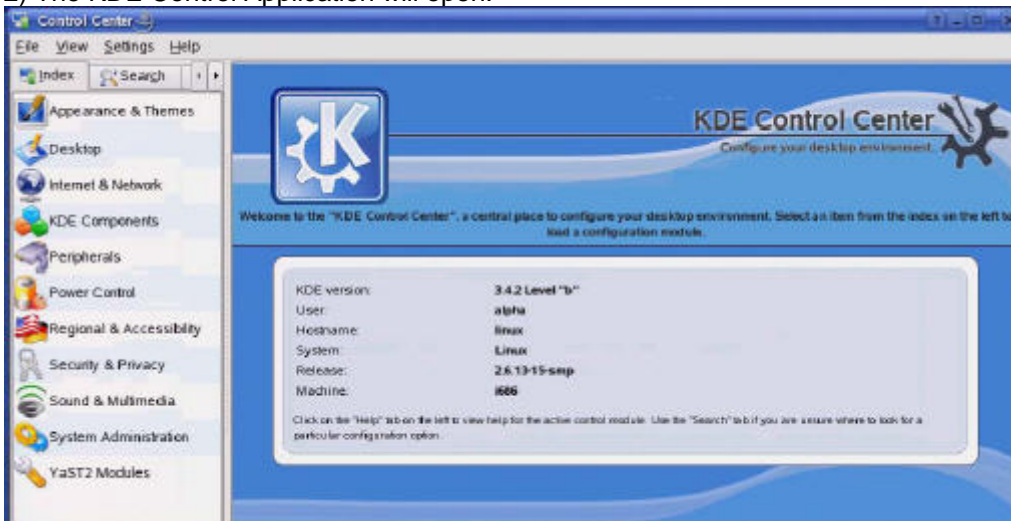
Configuring the mouse settings in Linux SuSE 10 with KDE 3.4 Desktop.

Configure the mouse settings in Linux SuSE 10 **before** connecting the Linux computer to SMB IP KVM switch device.

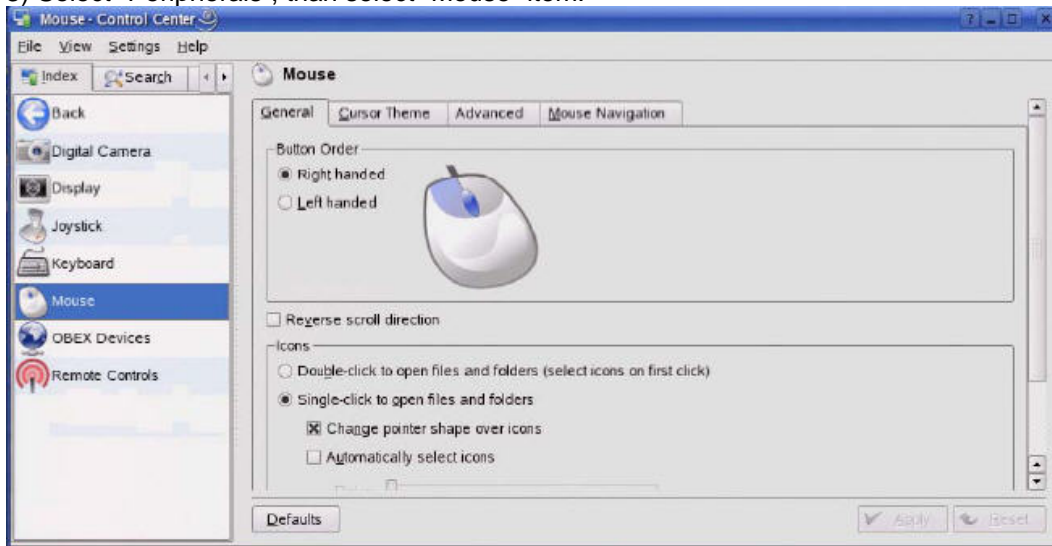
1) Go to "Control Center":



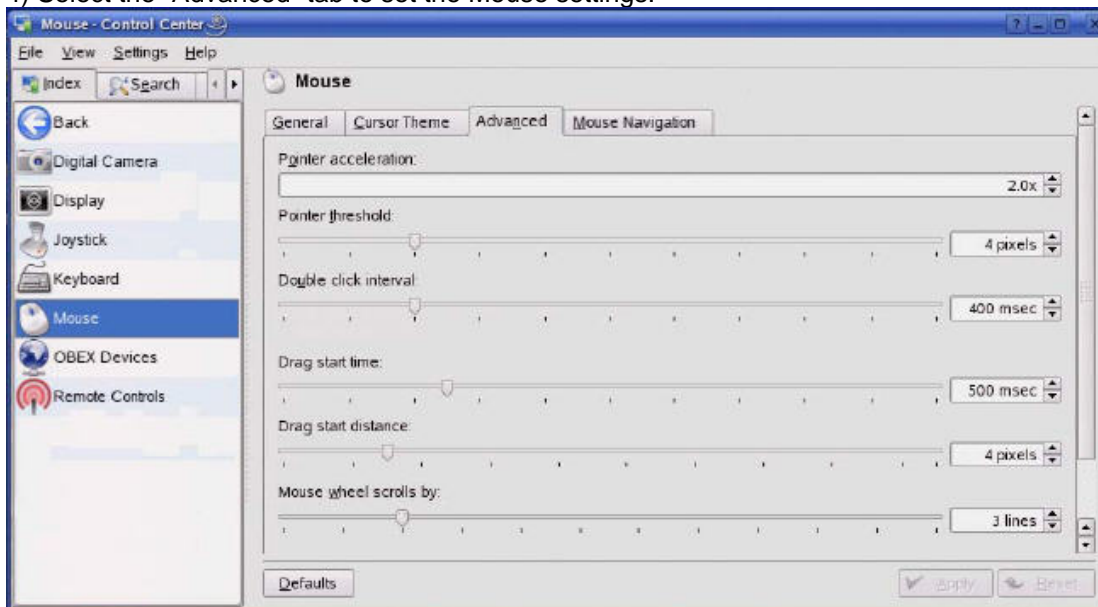
2) The KDE Control Application will open:



3) Select “Peripherals”, than select “Mouse” item:



4) Select the “Advanced” tab to set the Mouse settings:



5) Set the “Pointer Acceleration” to 2.0x and “Pointer Threshold” to 4 pixels. (The default settings for SuSE 10 are: Pinter acceleration = 2.0x and Pointer threshold = 4 pixels.)

6) Connect the Computer to the SMB IP KVM Switch and enter these values to the mouse settings dialog of the unit.

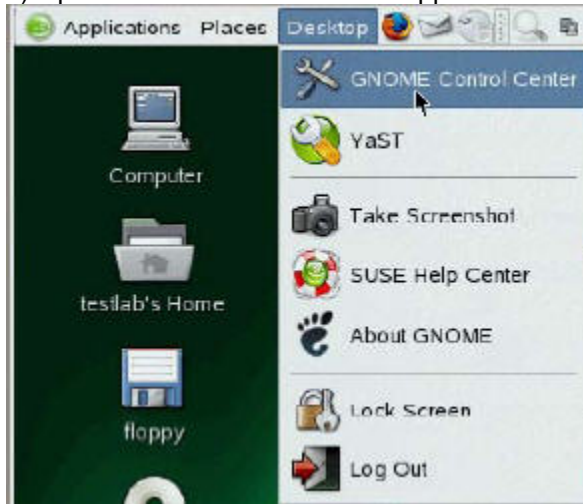
Configuring the mouse settings in Linux SuSE 10 with Gnome 2.12.0 Desktop.

Configure the mouse settings in Linux SuSE 10 **before** connecting the Linux computer to SMB IP KVM Switch.

The default mouse settings (Acceleration = 2 and Threshold = 4) will work fine in Gnome environment.

If you change these default settings using the Gnome Control Center application follow these steps before connecting the computer to a SMB IP KVM:

1) Open “Gnome Control Center” application under the “Desktop” menu:



2) The Desktop Preferences window will open. Double-click on the “Mouse” item:



3) The “Mouse Preferences” window appears.

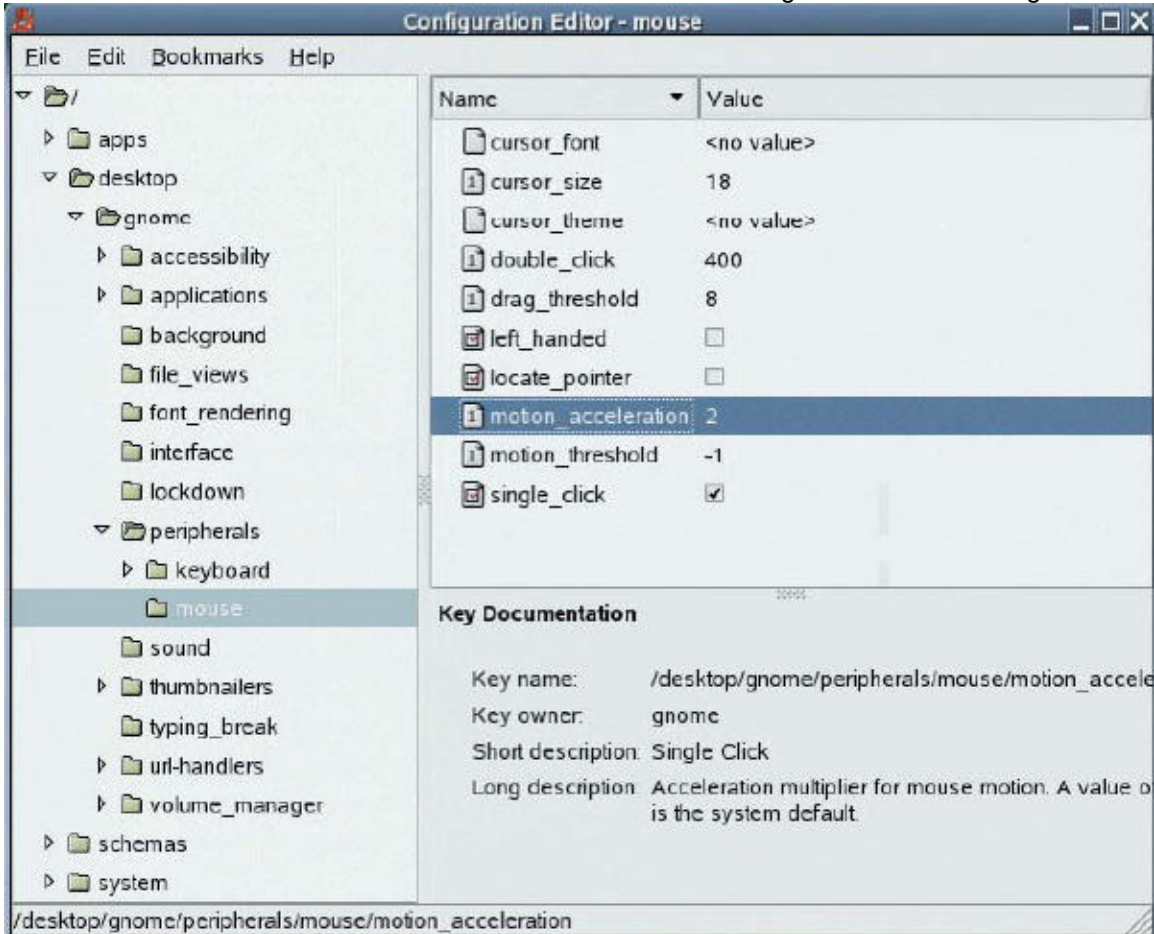
4) Select the “Motion” tab. Set the Acceleration / Sensitivity / Threshold sliders according to the picture below:



5) Then open the Gnome Configuration Editor utility to view these changes in numerical form. Navigate to the “Applications” menu and select System | Configuration | Gnome Configuration Editor:



6) The Gnome Configuration Editor window will open. Select Desktop | Gnome | Peripherals | Mouse items from the folded tree on the left. Current Mouse settings will show on the right:



7) The current settings for Mouse Acceleration and Threshold values will appear. If the values for the “motion_acceleration” and “motion_threshold” items set to “-1” then it means that they set to default settings and will work with “Acceleration = 2” and “Threshold = 4” settings in the SMB IP KVM Switch.

If the values are different from “-1”, then write them down, you will need to enter these “Acceleration” and “Threshold” values in the SMB IP KVM mouse settings.

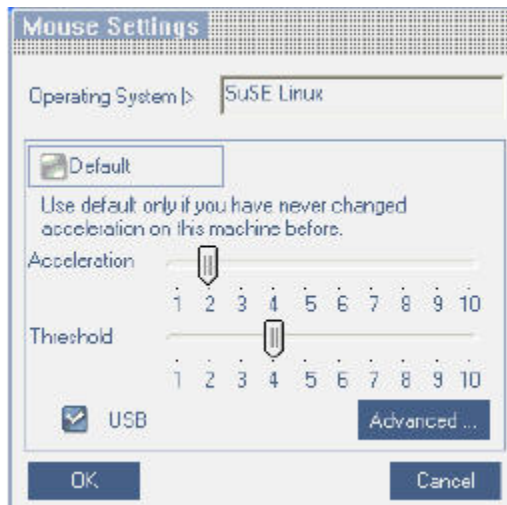
8) Connect the Computer to the SMB IP KVM Switch and enter these values to the mouse settings dialog of the unit.

Configuring the mouse settings in SMB IP KVM Switch.

1) Connect to the SMB IP KVM Switch. (Switch to the port where Linux computer is connected if KVM switch connected to the SMB IP KVM).

2) In the Control Menu select Mouse | Manual Settings.

3) From the drop down list select SuSE Linux and set the Acceleration and Threshold to the values set in the SuSE Linux:



4) Press OK to save the changes and then press Ctrl+M hotkey to synchronize the remote and local mice.