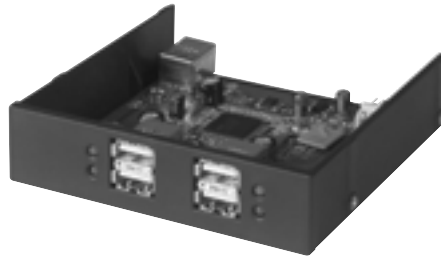


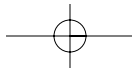
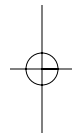
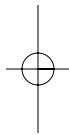


# Hi-Speed USB 2.0 4-Port Drive Bay Hub User Manual



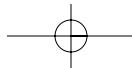
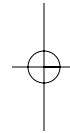
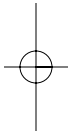
P74102

F5U261



## TABLE OF CONTENTS

Introduction .....	1
Features .....	2
Technical Specifications .....	3
Installation .....	4
Information .....	7

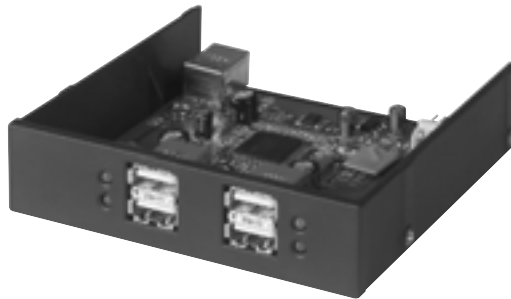


## INTRODUCTION

Congratulations and thank you for purchasing the Belkin Hi-Speed USB 2.0 4-Port Drive Bay Hub (the Hub). The Hub provides four downstream USB ports that are compatible with Hi-Speed USB 2.0 devices as well as with low- and full-speed USB 1.1 devices.

This means that the Hub is backward-compatible with all of your current USB 1.1 peripherals while it enables the ultrafast performance levels of next-generation USB 2.0 devices, including scanners, printers, mass storage devices, and high-resolution cameras. The Hub is self-powered, allowing for the cascading of devices with additional hubs, so that you can connect up to 127 USB devices to a single port. The Hub provides a multicolored status LED for each individual port, and a master power LED. For additional information, refer to the "Technical Specifications" section.

Fig. 1



## FEATURES

- Hi-Speed USB 2.0 (data rate 1.5/12/480Mbps) specification compliance
- Backward-compatible with USB 1.1 (data rate 1.5/12Mbps)
- Windows® 98 SE, Me, 2000, and XP compatibility
- USB Implementers Forum (USB-IF) approval
- Plug-and-Play functionality
- Hot swap capability of USB devices
- Over-current detection and protection
- Port-status indicator LEDs
- Four 480Mbps downstream ports
- Sizing to fit in 3.5-inch drive bay
- Powered by your computer's power supply

### Package Contents

- Hi-Speed USB 2.0 4-Port Drive Bay Hub
- USB "A" to "B" Device Cable
- User Manual

## TECHNICAL SPECIFICATIONS

Upstream Ports	1
Downstream Ports	4
Per-Port Voltage	DC +5V
Per-Port Current	500mA (max)
Power Mode	Self-powered
Operating Temperature	5° C ~ 40° C
Storage Temperature	-20° C ~ 60° C
Enclosure	Plastic
Power Supply	Powered by computer power supply

### Main Power LED Color Definitions:

Off	Not Operational
Red	Operational

### Port-Status LED Color Definitions:

Off	Not Operational
Amber	Error Condition
Green	Fully Operational
Blinking Off/Green	Software Attention
Blinking Off/Amber	Hardware Attention

## INSTALLATION

1. Turn off power and remove the cover from your computer.
2. Remove the front panel insert from an empty 3.5-inch drive bay, and install the Hub into the drive bay (consult your computer manual for information regarding installation of drive bay compatible devices). (See Fig. 2.)

Fig. 2



3. Plug a compatible power connector from your computer power supply onto the power connector on the rear of the Hub. (See Fig. 3.)

Fig. 3

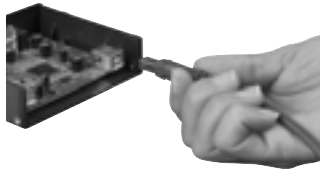




## INSTALLATION (CONTINUED)

4. Plug the provided USB cable into the USB connector on the rear of the Hub. (See Fig. 4). Plug the other end of the USB cable into an available port on a Hi-Speed USB 2.0 host adapter card.

Fig. 4



*Note A: The Hub must be connected to a USB 2.0-compliant host in order to function in high-speed mode (480Mbps data rate). If the Hub is connected to a USB 1.1-compliant host, it will operate only in low- or full-speed mode (1.5Mbps or 12Mbps).*

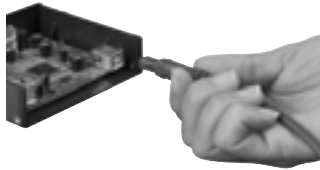
5. Replace your computer's cover and turn the power on.
6. Your Windows operating system will now detect the Hub and install the required drivers. (The Windows "Install New Hardware Wizard" may prompt you to provide your Windows Installation CD to complete the driver installation process.)

## INSTALLATION (CONTINUED)

*Note B—VERY IMPORTANT: Hi-Speed USB 2.0 hub drivers are included with most USB 2.0 PCI upgrade cards, and are pre-installed along with the PCI card drivers. If you purchased an upgrade card prior to the release of Hi-Speed USB 2.0 hub support, please check with your PCI card vendor for an updated USB 2.0 driver. The Belkin USB 2.0 driver supports all competitive PCI cards based on the NEC host controller, with the exception of those released by Adaptec. The most recent Belkin driver is available at [belkin.com](http://belkin.com).*

7. Plug the USB A connector of a USB device, or an additional hub, into any of the downstream ports of the Drive Bay Hub. (See Fig. 5.)

Fig. 5



*Note C: When plugging a USB device into the Hub for the first time, it may be necessary to reinstall the USB drivers for that device. Likewise, if you move the device to another port on the Hub, it may be necessary to reinstall the drivers.*

## INFORMATION

### FCC Statement

#### DECLARATION OF CONFORMITY WITH FCC RULES FOR ELECTROMAGNETIC COMPATIBILITY

We, Belkin Components, of 501 West Walnut Street, Compton CA 90220,  
declare under our sole responsibility that the product:  
F5U261

to which this declaration relates:

Complies with Part 15 of the FCC Rules. Operation is subject to the following  
two conditions: (1) this device may not cause harmful interference, and (2) this  
device must accept any interference received, including interference that may  
cause undesired operation.

### CE Declaration of Conformity

We, Belkin Components, declare under our sole responsibility that the F5U261, to which this  
declaration relates, is in conformity with Generic Emissions Standard EN55022 1998 and  
with Generic Immunity Standard EN55024 1998, EN61000-3-2, and EN61000-3-3.

### Belkin Components Limited Lifetime Product Warranty

Belkin Components warrants this product against defects in materials and workmanship for  
its lifetime. If a defect is discovered, Belkin will, at its option, repair or replace the product at  
no charge provided it is returned during the warranty period, with transportation charges  
prepaid, to the authorized Belkin dealer from whom you purchased the product. Proof of  
purchase may be required.

This warranty does not apply if the product has been damaged by accident, abuse, misuse,  
or misapplication; if the product has been modified without the written permission of Belkin;  
or if any Belkin serial number has been removed or defaced.

THE WARRANTY AND REMEDIES SET FORTH ABOVE ARE EXCLUSIVE IN LIEU OF ALL OTHERS,  
WHETHER ORAL OR WRITTEN, EXPRESSED OR IMPLIED. BELKIN SPECIFICALLY DISCLAIMS  
ANY AND ALL IMPLIED WARRANTIES, INCLUDING, WITHOUT LIMITATION, WARRANTIES OF  
MERCHANTABILITY AND FITNESS FOR A PARTICULAR PURPOSE.

No Belkin dealer, agent, or employee is authorized to make any modification, extension, or  
addition to this warranty.

BELKIN IS NOT RESPONSIBLE FOR SPECIAL, INCIDENTAL, OR CONSEQUENTIAL  
DAMAGES RESULTING FROM ANY BREACH OF WARRANTY, OR UNDER ANY OTHER  
LEGAL THEORY, INCLUDING BUT NOT LIMITED TO LOST PROFITS, DOWNTIME,  
GOODWILL, DAMAGE TO OR REPROGRAMMING, OR REPRODUCING ANY PROGRAM  
OR DATA STORED IN OR USED WITH BELKIN PRODUCTS.

**Tech Support**

US: 310.898.1100 ext. 2263  
800.223.5546 ext. 2263  
310.604.2089 (fax)  
techsupp@belkin.com

Europe: 00 800 223 55 460  
eurossupport@belkin.com

Australia: 1800 666 040



**Belkin Components**

501 West Walnut Street  
Compton • CA • 90220 • USA  
Tel: 310.898.1100  
Fax: 310.898.1111

**Belkin Components, Ltd.**

Express Business Park  
Shipton Way • Rushden • NN10 6GL  
United Kingdom  
Tel: +44 (0) 1933 35 2000  
Fax: +44 (0) 1933 31 2000

**Belkin Components B.V.**

Starparc Building • Boeing Avenue 333  
1119 PH Schiphol-Rijk • The Netherlands  
Tel: +31 (0) 20 654 7300  
Fax: +31 (0) 20 654 7349

**Belkin Components Ltd.**

7 Bowen Crescent • West Gosford  
NSW 2250 • Australia  
Tel: +61 (0) 2 4372 8600  
Fax: +61 (0) 2 4372 8603

