

IMPORTANT!

This Guide refers to the following Products:



All Belkin Modem Routers

How To Establish An Internet Connection

Please read the following carefully;

Synopsis:

This guide is designed to assist those with Belkin Modem Routers to establish an Internet Connection.

We assume that customers have to have hand their Internet Service Provider (ISP) User Details as these are required to form a connection.

Requirements:

In order to complete the process described in this document the following is required;

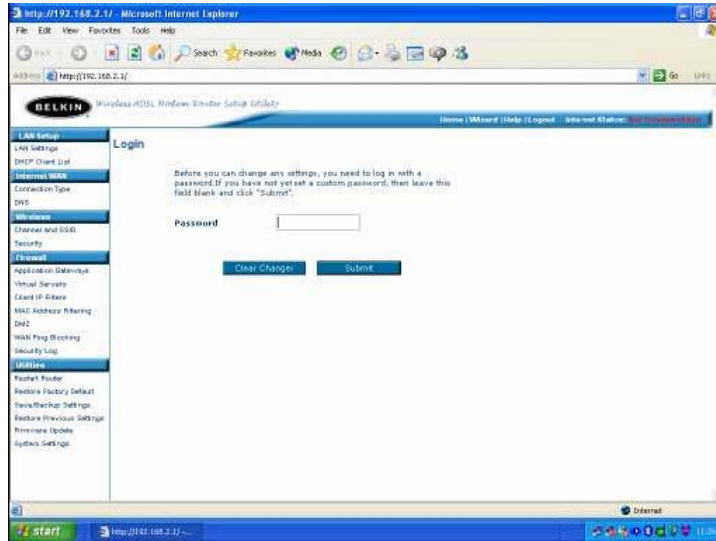
- A Belkin Modem Router (connected as described in the Products User Manual or Quick Install Guide).
- A Computer currently connected to the Modem Router (preferably via Ethernet Cable).
- ISP Settings (Username, Password)
- Phone line (fitted if required with an ADSL Filter)

How To Establish An Internet Connection Via Your Modem Router

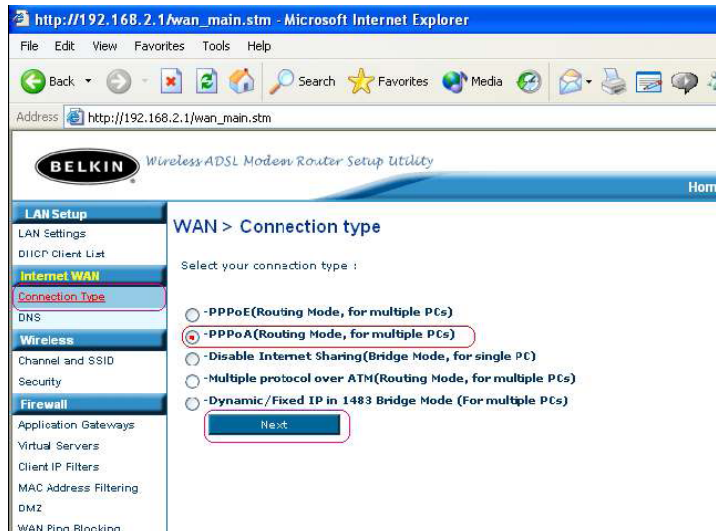
Open your Internet Browser and type '192.168.2.1' into the Address Bar.



This should result in a User Interface appearing similar to the one shown below;



Leave the 'Password' field empty unless you have already configured one yourself. Next, Locating the Menu heading 'Internet WAN' and click on the first sub-heading 'Connection Type' so that a page similar to the following is displayed;



Choose the connection: 'PPPoA' as indicated and press 'Next'.

The screenshot shows the 'WAN > Connection Type > PPPoA Interface' configuration page. The left sidebar contains a navigation menu with categories: LAN Setup, Internet WAN, Wireless, Firewall, and Utilities. The main content area is titled 'WAN > Connection Type > PPPoA Interface' and includes the instruction: 'Please enter the following information provided by your ISP'. The form fields are as follows:

- Username >**: andy.kemp@hg26.bt
- Password >**: *****
- Re-type Password >**: *****
- VPI / VCI >**: 0 / 88
- Encapsulation >**: VC/MLX (dropdown menu)
- Dial on Demand >**:
- Idle Time (Minute) >**: 0
- Use Static IP Address >**:

At the bottom of the form are two buttons: 'Back' and 'Next'.

You will need to enter the settings as provided by your Internet Service Provider (ISP).

If you have options such as Encapsulation and MTU, then these should be set to VCMUX and 1454 respectively.

Once all the appropriate settings have been entered, you may click on 'Apply Changes' so that the Modem Router can save the data and attempt a connection on the basis of the information.

You will see a notification that your 'Data Is Being Saved' after which you may be returned to the same page again. Navigate to the 'Home' page by using the navigational bar at the top of the Interface.



The Modem Router should now show you that the 'Internet Status' is 'Connected' in the top right-hand corner of the interface. On some Modem Router models you may need to select the 'Connect' button found on the 'Home' page first.

