

USB 2.0 Ethernet Adapter

User Manual

8820-00931 F4U047

SAFETY INSTRUCTIONS

- Keep this User Manual for future reference
- Keep equipment away from humidity
- If any of the below scenarios arise, be sure to get your equipment checked by a service technician:
 - The adapter has been exposed to moisture
 - The adapter has been dropped and damaged
 - The adapter has obvious signs of breakage
 - The adapter has not been working correctly or you cannot get it to work according to the instructions listed in the User Manual

TABLE OF CONTENTS

Table of Contents	SECTIONS	1	2	3	4
-------------------	----------	---	---	---	---

Introduction	1
Features	2
Package Contents.	2
System Requirements.	2
LED Status.	2
Installation	3
Windows 2000/XP/Windows Vista/Windows 7 . . .	3
Mac OS X v10 x	7
Specifications	12
Regulatory Compliance	13
FCC Conditions	13
CE	13
WEEE Information	13
Warranty	14

INTRODUCTION

Table of Contents	SECTIONS	1	2	3	4
-------------------	-----------------	----------	----------	----------	----------

The Belkin USB 2.0 Ethernet Adapter allows your computer to instantly connect to a 10/100Mbps network through a USB port. It is also an ideal USB-to-LAN alternative for gaming consoles that need network access in an environment lacking wireless capability.

INTRODUCTION

Features

- Features
- Compliant with USB 2.0 specification
- Compliant with IEEE 802.3 (10Base-T) and 802.3u (100Base-Tx) standards
- Supports both full-duplex and half-duplex operations
- Supports suspend mode and remote wakeup via link-up and magic packet
- Powered by USB port only
- Equipped with diagnostic LEDs
- Plug-and-play installation

Package Contents

- Belkin USB 2.0 Ethernet Adapter
- CD (Driver and User Manual)
- Quick Installation Guide

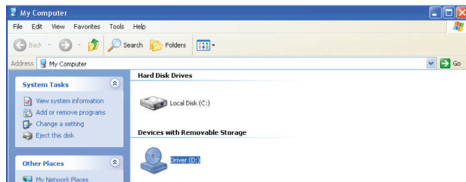
System Requirements

- IBM compatible Pentium® 233MHz or faster PC or Mac® computer
- 64MB RAM or more
- One available USB port
- Windows® 2000, XP, Windows Vista®, Windows 7
- Mac OS® X v10.x

LED Status

LED	Color	Description
Power	Green	On for connections to a 100Mbps network Off for connection to a 10Mbps network or not connected
Link	Yellow	LAN activity; blinking when there is data flow between LAN and the host computer

INSTALLATION



Windows 2000/XP/Windows Vista/Windows 7

Do not connect the adapter to your computer before you install the provided driver.

Note: Installation steps may differ slightly different based on the version of your operating system.

1. Insert CD into your disk drive
2. Double-click on “My Computer”
3. Double-click on “Driver (D:)”

INSTALLATION

Table of Contents

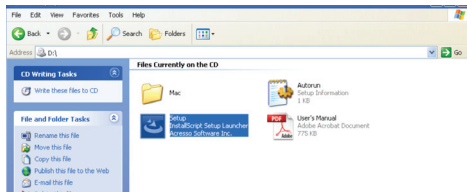
SECTIONS

1

2

3

4



4. Double-click on the file “Setup”

INSTALLATION

Table of Contents

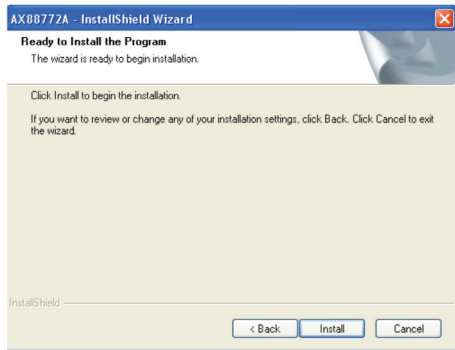
SECTIONS

1

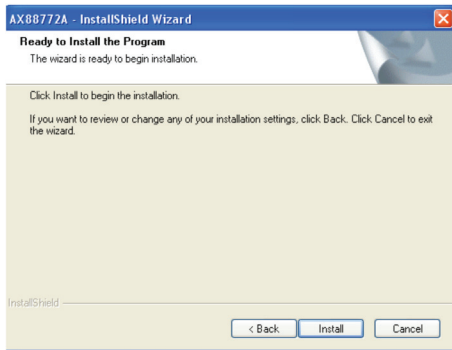
2

3

4



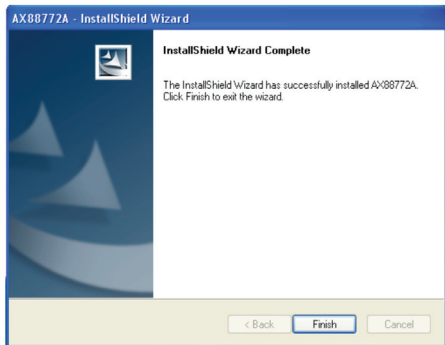
5. In order to begin installation, click on "Next"



6. Click "Install"

INSTALLATION

Table of Contents	SECTIONS	1	2	3	4
-------------------	----------	---	---	---	---



7. Click "Finish"

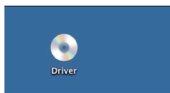
Note: You may be prompted to restart your computer in order to complete installation.

8. Plug in your Belkin USB 2.0 Ethernet Adapter and connect your Ethernet cable (not included)

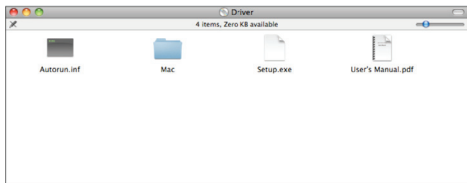
INSTALLATION

Table of Contents	SECTIONS	1	2	3	4
-------------------	----------	---	---	---	---

MAC OS X v10.x



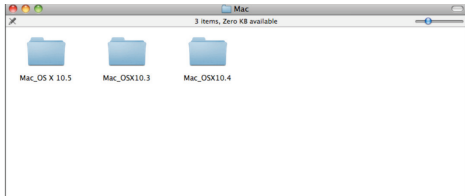
1. Insert the provided driver CD into your CD drive
2. Double-click the CD on your desktop



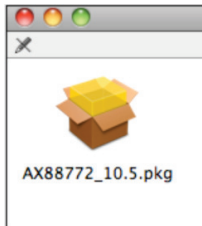
3. Double-click on the "Mac" folder

INSTALLATION

Table of Contents	SECTIONS	1	2	3	4
-------------------	----------	---	---	---	---



4. Select your Mac OS version



5. In the directory of Mac 10.x, double-click "AX88772_10.x" to execute the installer program

INSTALLATION

Table of Contents

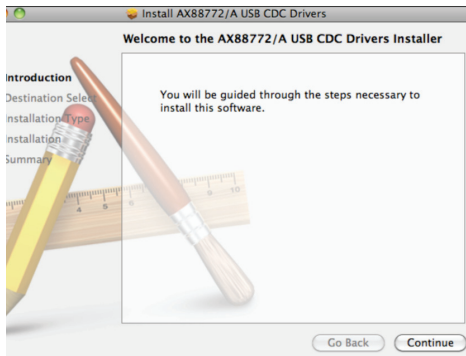
SECTIONS

1

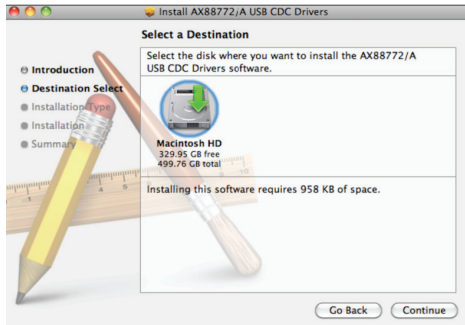
2

3

4



6. Click "Continue"



7. Select the destination volume to install driver software and click on "Continue"

INSTALLATION

Table of Contents

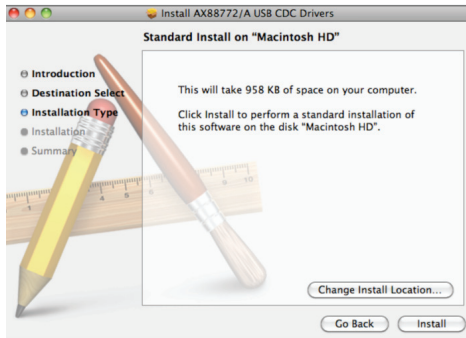
SECTIONS

1

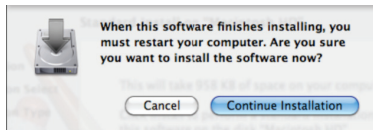
2

3

4



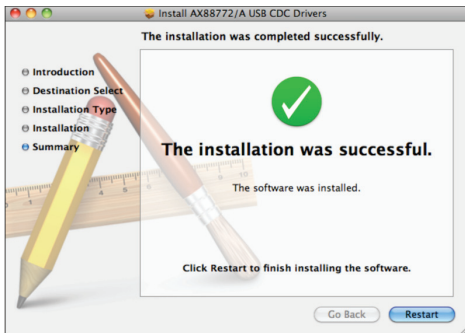
8. Click "Install"



9. Click "Continue Installation"

INSTALLATION

Table of Contents	SECTIONS	1	2	3	4
-------------------	----------	---	---	---	---



10. Click “Restart”

11. Plug in your Belkin USB 2.0 Ethernet Adapter and connect your Ethernet cable (not included)

SPECIFICATIONS

Table of Contents	SECTIONS	1	2	3	4
-------------------	----------	---	---	---	---

Items	Description
Network Standards	IEEE 802.3: 10Base-T IEEE 802.3u: 100Base-T
Data Transfer Rates	Ethernet: 10Mbps (Half/Full Duplex) Fast Ethernet: 100Mbps (Half/Full Duplex)
Data Bus	USB 2.0 (1.1-compliant)
LED Indicators	Power, Link
Power Consumption	850mW
Power Management	Suspend mode, hibernation mode
Network Interface	Female RJ45 jack
RAM	Embedded 20KB SRAM for RX packet buffering and 20KB SRAM for TX packet buffering
Operating System Support	Windows 2000, XP, Windows Vista, 7 Mac OS X v10.3 or newer
Dimensions	66 x 22 x 15mm (L x W x H)
Weight	25g
Operating Temperature	0° C to 70° C

Note: Specifications are subject to change without further notice.

REGULATORY COMPLIANCE

Table of Contents

SECTIONS

1

2

3

4

FCC Conditions

This equipment has been tested and found to comply with Part 15 of the FCC Rules. Operation is subject to the following two conditions:

1. This device may not cause harmful interference, and
2. This device must accept any interference received, including interference that may cause undesired operation.

CE Declaration of Conformity

This equipment is in compliance with the requirements of the following regulations:
EN 55 022: CLASS B

WEEE Information

According to the WEEE (Waste Electrical and Electronic Equipment) Directive, do not dispose of this product as household waste or commercial waste. Waste electrical and electronic equipment should be appropriately collected and recycled as required by practices established for your country. For information on recycling of this product, please contact your local authorities, your household waste disposal service, or the shop where you purchased the product.



Belkin International, Inc., Limited 1-Year Product Warranty

What this warranty covers.

Belkin International, Inc. ("Belkin") warrants to the original purchaser of this Belkin product that the product shall be free of defects in design, assembly, material, or workmanship.

What the period of coverage is.

Belkin warrants the Belkin product for one year.

What will we do to correct problems?

Product Warranty.

Belkin will repair or replace, at its option, any defective product free of charge (except for shipping charges for the product). Belkin reserves the right to discontinue any of its products without notice, and disclaims any limited warranty to repair or replace any such discontinued products. In the event that Belkin is unable to repair or replace the product (for example, because it has been discontinued), Belkin will offer either a refund or a credit toward the purchase of another product from Belkin.com in an amount equal to the purchase price of the product as evidenced on the original purchase receipt as discounted by its natural use.

What is not covered by this warranty?

All above warranties are null and void if the Belkin product is not provided to Belkin for inspection upon Belkin's request at the sole expense of the purchaser, or if Belkin determines that the Belkin product has been improperly installed, altered in any way, or tampered with. The Belkin Product Warranty does not protect against acts of God such as flood, lightning, earthquake, war, vandalism, theft, normal-use wear and tear, erosion, depletion, obsolescence, abuse, damage due to low voltage disturbances (i.e. brownouts or sags), non-authorized program, or system equipment modification or alteration.

REGULATORY COMPLIANCE

How to get service.

To get service for your Belkin product you must take the following steps:

1. Contact Belkin International, Inc., at 12045 Waterfront Drive, Los Angeles, CA 90094, Attn: Customer Service, or call (800)-223-5546, within 15 days of the Occurrence. Be prepared to provide the following information:
 - a. The part number of the Belkin product.
 - b. Where you purchased the product.
 - c. When you purchased the product.
 - d. Copy of original receipt.
2. Your Belkin Customer Service Representative will then instruct you on how to forward your receipt and Belkin product and how to proceed with your claim.

Belkin reserves the right to review the damaged Belkin product. All costs of shipping the Belkin product to Belkin for inspection shall be borne solely by the purchaser. If Belkin determines, in its sole discretion, that it is impractical to ship the damaged equipment to Belkin, Belkin may designate, in its sole discretion, an equipment repair facility to inspect and estimate the cost to repair such equipment. The cost, if any, of shipping the equipment to and from such repair facility and of such estimate shall be borne solely by the purchaser. Damaged equipment must remain available for inspection until the claim is finalized. Whenever claims are settled, Belkin reserves the right to be subrogated under any existing insurance policies the purchaser may have.

REGULATORY COMPLIANCE

How state law relates to the warranty.

THIS WARRANTY CONTAINS THE SOLE WARRANTY OF BELKIN. THERE ARE NO OTHER WARRANTIES, EXPRESSED OR, EXCEPT AS REQUIRED BY LAW, IMPLIED, INCLUDING THE IMPLIED WARRANTY OR CONDITION OF QUALITY, MERCHANTABILITY OR FITNESS FOR A PARTICULAR PURPOSE, AND SUCH IMPLIED WARRANTIES, IF ANY, ARE LIMITED IN DURATION TO THE TERM OF THIS WARRANTY.

Some states do not allow limitations on how long an implied warranty lasts, so the above limitations may not apply to you.

IN NO EVENT SHALL BELKIN BE LIABLE FOR INCIDENTAL, SPECIAL, DIRECT, INDIRECT, CONSEQUENTIAL OR MULTIPLE DAMAGES SUCH AS, BUT NOT LIMITED TO, LOST BUSINESS OR PROFITS ARISING OUT OF THE SALE OR USE OF ANY BELKIN PRODUCT, EVEN IF ADVISED OF THE POSSIBILITY OF SUCH DAMAGES.

This warranty gives you specific legal rights, and you may also have other rights, which may vary from state to state. Some states do not allow the exclusion or limitation of incidental, consequential, or other damages, so the above limitations may not apply to you.

BELKIN®

www.belkin.com

Technical Support

US

<http://www.belkin.com/support>

Singapore

1800 622 1130

UK

<http://www.belkin.com/uk/support>

Europe

<http://www.belkin.com/uk/support>

Australia

<http://www.belkin.com/au/support>

New Zealand

<http://www.belkin.com/au/support>

© 2011 Belkin International, Inc. All rights reserved. All trade names are registered trademarks of respective manufacturers listed. Mac OS and Mac are trademarks of Apple Inc., registered in the U.S. and other countries. Windows and Windows Vista are either registered trademarks or trademarks of Microsoft Corporation in the United States and/or other countries.