



USB-Infrared Smartbeam

Making your Infrared device talk to your PC



En

Fr

De

NL

Es

It

User Manual

F5U235ea

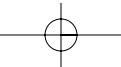
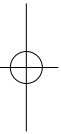
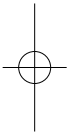
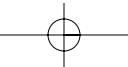
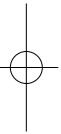
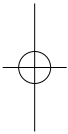


TABLE OF CONTENTS

En

Introduction	.1
Overview	.2
System Requirements	.2
Package Contents	.2
Install the driver of USB-Infrared Smartbeam	.3
Windows 98SE	.3
Windows ME	.7
Windows 2000	.9
Windows XP	.11
Installation	.15
Ensuring that the USB-Infrared Smartbeam is installed successfully under Windows 98SE/ME	.15
Ensuring that the USB-Infrared Smartbeam is installed successfully under under Windows 2000/XP	.16
Removal of the USB-Infrared Smartbeam	.17
Windows 98SE/ME	.17
Windows 2000/XP	.19
Information	.21



INTRODUCTION

En

Thank you for choosing the USB Infrared Smartbeam™ (USB-IrDA Adapter) from Belkin.

The USB-Infrared Smartbeam supports FIR (4Mbps) and SIR (115200bps) baud rate to the infrared devices for example: mobile phone, PDA, printers, computers etc. The USB-Infrared Smartbeam is compliant with the USB 1.1 specification.

OVERVIEW

System Requirements

- USB host controller (PCI or PCMCIA interface).
- Windows 98SE/Me/2000/XP operating system.

Package Contents

- USB-Infrared Smartbeam
- USB Extension Cable
- User Manual
- CD

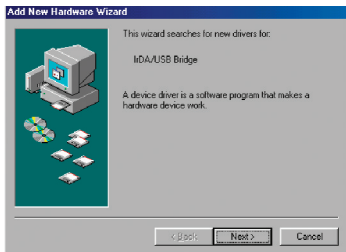
Note: *Please review installation instructions fully before installation as installation differs under Windows 98SE.*

INSTALL THE DRIVER OF USB-INFRA-RED SMARTBEAM

En

Windows 98SE

1. Insert the supplied CD Rom and then connect the USB-Infrared Smartbeam to the USB host controller of PC or Notebook.
2. Click “Next” to continue the driver installation.



3. Select “Search for the best driver for your device.” Click “Next” to continue.



INSTALL THE DRIVER OF USB-INFRARED SMARTBEAM

4. Select "Specify a location", click "Browse" then browse to the folder named "Drv98" on the supplied CD. Click "Next" to continue.



5. Click "Next" to continue.



INSTALL THE DRIVER OF USB-IRRED SMARTBEAM

En

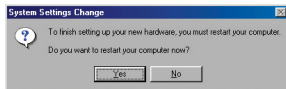
6. You may be required to enter your Windows 98SE CD, if requested please insert the Windows 98SE CD. Click "OK" to continue



7. Click "Finish" to complete the driver installation.

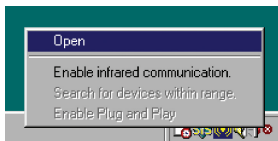


8. Once installation is complete you will need to restart your computer. Click "Yes" to restart your computer.

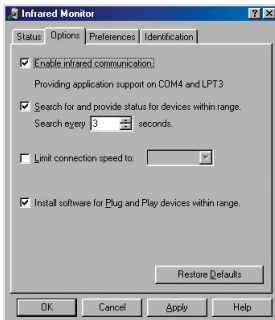


INSTALL THE DRIVER OF USB-IRFRAED SMARTBEAM

9. Move the cursor to the IRDA icon in the system tray near the clock.
Click the mouse right button to select "Open" item.



10. Select "Options" item.
Click "Enable infrared communication" check option to enable.
Click "OK" to complete the setting and close the Infrared Monitor.



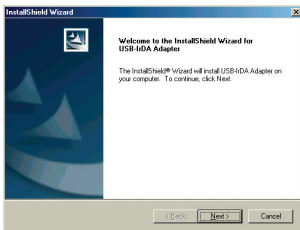
Installation is now complete.
Please enable the infrared on the device you wish to connect to.

INSTALL THE DRIVER OF USB-INFRARED SMARTBEAM

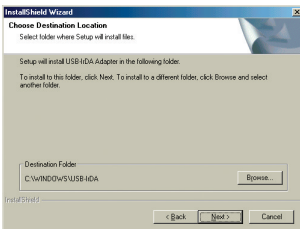
En

Windows ME

1. Insert the supplied CD and double click on "my computer", then double click your CD rom drive. A list of files will be displayed. Double click the "SETUP.EXE" program file to install the USB-Infrared Smartbeam.
2. Click "Next" to continue.

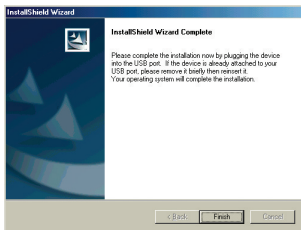


3. Click "Next" to continue.

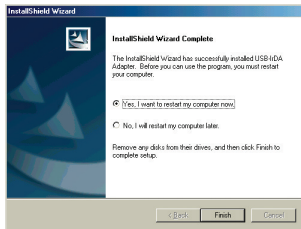


INSTALL THE DRIVER OF USB-INFRA-RED SMARTBEAM

4. Click “Finish” to complete the driver installation.



5. Select “Yes, I want to restart my computer now”. Click “Finish” to reboot your computer.



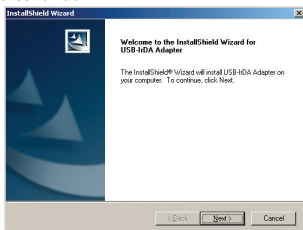
Once restarted connect the USB-Infrared Smartbeam into your USB port of your PC or Notebook.

INSTALL THE DRIVER OF USB-INFRARED SMARTBEAM

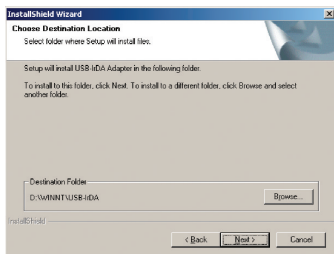
En

Windows 2000

1. Insert the supplied CD, double click on "my computer", then double click your CD rom drive. A list of files will be displayed. Double click the "SETUP.EXE" program file to install the USB-Infrared Smartbeam
2. Click "Next" to continue

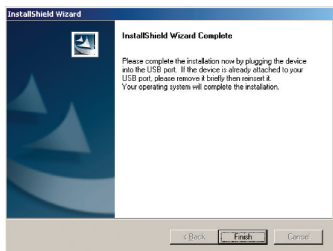


3. Click "Next" to continue



INSTALL THE DRIVER OF USB-INFRA-RED SMARTBEAM

4. Click "Finish" and then plug the USB-Infrared Smartbeam into the USB port of your PC or Notebook.

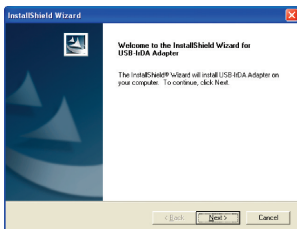


INSTALL THE DRIVER OF USB-INFRARED SMARTBEAM

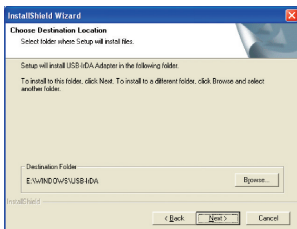
En

Windows XP

1. Insert the supplied CD and double click on "my computer", then double click your CD rom drive. A list of files will be displayed. Double click the "SETUP.EXE" program file to install the USB-Infrared Smartbeam.
2. Click "Next" to continue.

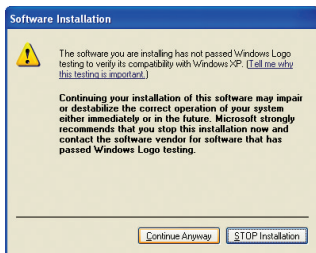


3. Click "Next" to continue.

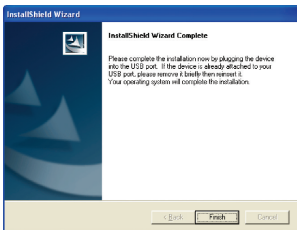


INSTALL THE DRIVER OF USB-INFRARED SMARTBEAM

4. Select “Continue Anyway” button to continue



5. Click “Finish” and then plug the USB-Infrared Smartbeam into the USB port of your PC or Notebook.



INSTALL THE DRIVER OF USB-IRRED SMARTBEAM

En

6. Select "Install the software automatically" and click "Next" to continue.



7. Click "Continue Anyway" button to continue.



INSTALL THE DRIVER OF USB-IRRED SMARTBEAM

- Click "Finish" to complete the hardware installation.



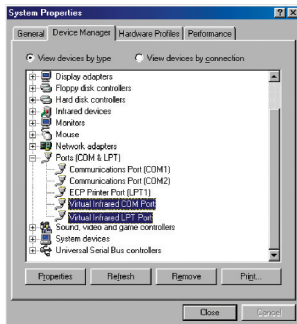
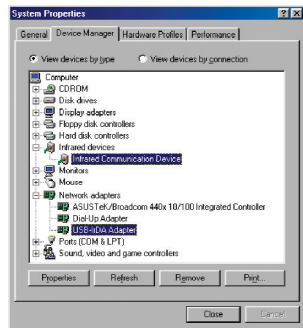
INSTALLATION

En

Ensuring that the USB-Infrared Smartbeam is installed successfully under Windows 98SE/ME

Right click "My computer", select properties and then select "Device Manager".

Please ensure that the 4 highlighted entries are listed. If these are not listed, or installed with an exclamation mark please fully uninstall using instructions listed below.

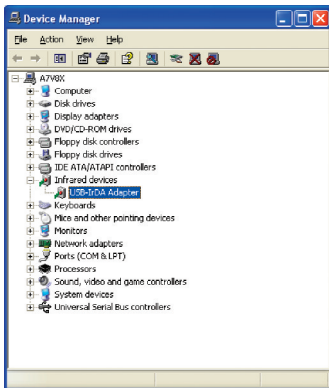


INSTALLATION

Ensuring that the USB-Infrared Smartbeam is installed successfully under Windows 2000/XP

Right click “My computer”, select properties. Click “Hardware”, then select “Device Manager”.

Please ensure that the USB-Infrared Smartbeam is listed as below. If this is not the case please uninstall and re-install the device using the instructions listed below

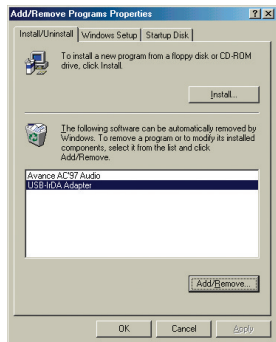


REMOVAL OF THE USB-INFRARED SMARTBEAM

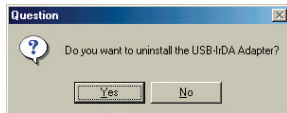
En

Windows 98SE/ME

1. Click start, control panel.
Double click Add/Remove Programs
Select the "USB-IrDA Adapter" and click "Add/Remove" to uninstall the driver.

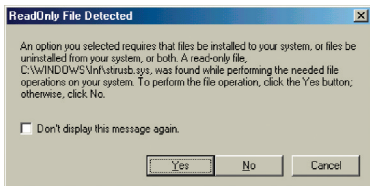


2. Click "Yes" to uninstall the USB-Infrared Smartbeam.

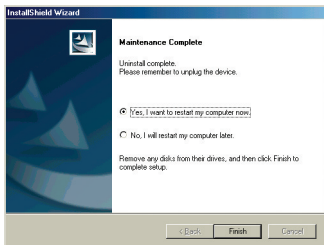


REMOVAL OF THE USB-IR INFRARED SMARTBEAM

3. You may see the message listed below, if so Click “Yes” to continue.



4. Select “Yes, I want to restart my computer now.”
Unplug the “USB-Infrared Smartbeam” and click finish to restart the computer

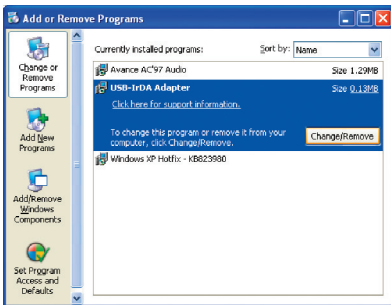


REMOVAL OF THE USB-IRRED R SMARTBEAM

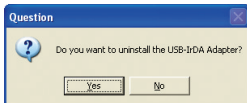
En

Windows 2000/XP

1. Click start, then control panel and double click "Add/Remove Programs (for Windows 2000)" "Add or Remove Programs (for Windows XP)" and double click. Select the "USB-IrDA Adapter" item and click "Change/Remove" to uninstall the driver.

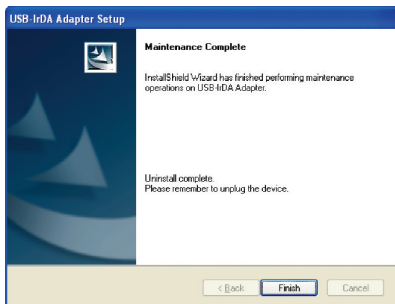


2. Click "Yes" to uninstall the USB-Infrared Smartbeam.



REMOVAL OF THE USB-IR INFRARED SMARTBEAM

3. Click “Finish” and unplug the USB-Infrared Smartbeam.



INFORMATION

En

FCC Statement

DECLARATION OF CONFORMITY WITH FCC RULES FOR ELECTROMAGNETIC COMPATIBILITY

We, Belkin Corporation, of 501 West Walnut Street, Compton, CA 90220, declare under our sole responsibility that the product:

F5U235ea

to which this declaration relates:

Complies with Part 15 of the FCC Rules. Operation is subject to the following two conditions: (1) this device may not cause harmful interference, and (2) this device must accept any interference received, including interference that may cause undesired operation.

CE Declaration of Conformity

We, Belkin Components, declare under our sole responsibility that the F5U235, to which this declaration relates, is in conformity with Generic Emissions Standard EN550022 1998 and with Generic Immunity Standard EN550024 1998, EN61000-3-2, and EN61000-3-3.

Belkin Corporation Limited Lifetime Product Warranty

Belkin Corporation warrants this product against defects in materials and workmanship for its lifetime. If a defect is discovered, Belkin will, at its option, repair or replace the product at no charge provided it is returned during the warranty period, with transportation charges prepaid, to the authorized Belkin dealer from whom you purchased the product. Proof of purchase may be required.

This warranty does not apply if the product has been damaged by accident, abuse, misuse, or misapplication; if the product has been modified without the written permission of Belkin; or if any Belkin serial number has been removed or defaced.

THE WARRANTY AND REMEDIES SET FORTH ABOVE ARE EXCLUSIVE IN LIEU OF ALL OTHERS, WHETHER ORAL OR WRITTEN, EXPRESSED OR IMPLIED. BELKIN SPECIFICALLY DISCLAIMS ANY AND ALL IMPLIED WARRANTIES, INCLUDING, WITHOUT LIMITATION, WARRANTIES OF MERCHANTABILITY AND FITNESS FOR A PARTICULAR PURPOSE.

No Belkin dealer, agent, or employee is authorized to make any modification, extension, or addition to this warranty.

BELKIN IS NOT RESPONSIBLE FOR SPECIAL, INCIDENTAL, OR CONSEQUENTIAL DAMAGES RESULTING FROM ANY BREACH OF WARRANTY, OR UNDER ANY OTHER LEGAL THEORY, INCLUDING BUT NOT LIMITED TO LOST PROFITS, DOWNTIME, GOODWILL, DAMAGE TO OR REPROGRAMMING OR REPRODUCING ANY PROGRAM OR DATA STORED IN OR USED WITH BELKIN PRODUCTS.

BELKIN[®]

belkin.com

Belkin Corporation

501 West Walnut Street
Compton • CA • 90220 • USA
Tel: 310.898.1100
Fax: 310.898.1111

Belkin Components, Ltd.

Express Business Park
Shipton Way • Rushden • NN10 6GL
United Kingdom
Tel: +44 (0) 1933 35 2000
Fax: +44 (0) 1933 31 2000

Belkin Components B.V.

Starparc Building • Boeing Avenue 333
1119 PH Schiphol-Rijk • The Netherlands
Tel: +31 (0) 20 654 7300
Fax: +31 (0) 20 654 7349

Belkin GmbH

Hanebergstrasse 2
80637 München • Germany
Tel: +49 (0) 89 1434 05-0
Fax: +49 (0) 89 / 143405-100

Belkin Tech Support

US: 310.898.1100 ext. 2263
800.223.5546 ext. 2263
Europe: 00 800 223 55 460
Australia: 1800 666 040

© 2004 Belkin Corporation. All rights reserved.
All trade names are registered trademarks of respective manufacturers listed.

P74479ea