

BELKIN®

www.belkin.com

Belkin Tech Support

US: 800-282-2355

310-898-1100, ext. 2263

UK: 0845 607 77 87

Australia: 1800 235 546

New Zealand: 0800 235 546

Singapore: 65 64857620

Europe: www.belkin.com/support

Belkin International, Inc.

Belkin International, Inc.

501 West Walnut Street

Los Angeles, CA 90220, USA

310-898-1100

310-898-1111 fax

Belkin Ltd.

Express Business Park, Shipton Way

Rushden, NN10 6GL, United Kingdom

+44 (0) 1933 35 2000

+44 (0) 1933 31 2000 fax

Belkin Ltd.

4 Pioneer Avenue

Tuggerah Business Park

Tuggerah, NSW 2259, Australia

+61 (0) 2 4350 4600

+61 (0) 2 4350 4700 fax

Belkin B.V.

Boeing Avenue 333

1119 PH Schiphol-Rijk, The Netherlands

+31 (0) 20 654 7300

+31 (0) 20 654 7349 fax

BELKIN®

OmniView® Secure KVM Switch



User Manual

F1DN102U
F1DN104U
F1DN108U

Table of Contents

1. Introduction	1
Package Contents.....	1
2. Overview	2
Security Features.....	2
Other Features.....	3
Equipment Requirements	4
System Requirements	5
Unit Display Diagrams.....	6
Specifications	7
3. Installation	8
Pre-Configuration.....	8
Mounting the Switch (optional).....	9
Connecting the Console to the Switch.....	11
Powering Up the Systems	13
Selecting a Computer Using Port Selectors	14
4. Using your Switch	14
5. Frequently Asked Questions	15
6. Troubleshooting	16
7. Information	19

Congratulations and thank you for purchasing this Belkin OmniView Secure KVM Switch (the Switch). Designed especially for secure military and government installations, the Switch provides the centralized control required by today's IA (Information Assurance) computer environments. It allows users to manage multiple computers from a single USB console, while preventing unintended data transfer between computers running on different security levels.

This User Manual provides all the details you'll need to install and operate your new Switch, in addition to expert troubleshooting advice—in the unlikely event of a problem. For quick and easy installation, please refer to the Quick Installation Guide included in your packaging.

We appreciate your business and are confident that you will soon see for yourself why over 1 million Belkin OmniView products are in use worldwide.

Package Contents



OmniView Secure
KVM Switch



5V DC, 3A Global
Power Adapter



4 Interchangeable
AC Plugs¹



User Manual



Quick
Installation Guide



Rack-Mount
Brackets with Screws
(F1DN108U
model only)

¹ Includes AC plugs for the U.S., U.K., Europe, and Australia.

Important: Tamper-evident tape has been placed on both sides of the Switch, to provide indication if the product has been opened or compromised (see diagram on page 6). If one of the tapes has been removed or appears disrupted, please call Belkin Technical Support at (800) 282-2355.

Security Features

- **Dedicated Processors**

Designed specifically for secure environments, the Switch features a dedicated processor per computer port. This keeps each computer running on different security levels completely separated and secure at all times, and prevents any unintended data transfer between computers.

- **No Memory Buffer**

The Switch does not have a memory buffer and does not have the ability to store data. This prevents any keystrokes or other data input from being unintentionally transferred as you switch between computers, ensuring the integrity of your data. The Switch does not include any features that require memory, such as hot keys, AutoScan, or an on-screen display (OSD).

- **Non-Reprogrammable Firmware**

The Switch features custom firmware that is not reprogrammable, preventing the ability to tamper with the KVM logic.

- **Tamper-Evident Tape**

Tamper-evident tape is placed on both sides of the enclosure, to provide indication if the Switch has been opened or compromised.

- **Tamper-Proof Hardware**

All integrated circuits are soldered directly to the printed circuit board to prevent tampering with the components.

- **NIAP Listing**

The Switch is listed by the National Information Assurance Partnership (NIAP). It is NIAP Common Criteria validated to EAL 4 (Evaluation Assurance Level 4).

Other Features

- **USB Support**

The Switch is compatible with USB 1.1 and USB 2.0 technology and supports Plug-and-Play connectivity with USB computers, keyboards, and mice.

- **Video Resolution**

The Switch supports video resolutions of up to 1920x1440@75Hz.

- **Dedicated Port Selectors**

Port selectors, located conveniently on the front panel of the Switch, allow you to switch easily from one computer to the next. Each button controls a single computer port.

- **LED Indicators**

An LED above each port selector illuminates to indicate that the console currently controls the corresponding computer. As a port selector is pushed, the LED above it will light up.

- **Metal Enclosure**

The Switch features a rugged, metal enclosure that provides stability and allows the Switch to be placed beneath your monitor or other desk item.

- **Desktop or Rack-Mount Installation**

With its compact design, the Switch can be placed on your desktop or mounted to a standard 19-inch server rack for 1U installation.²

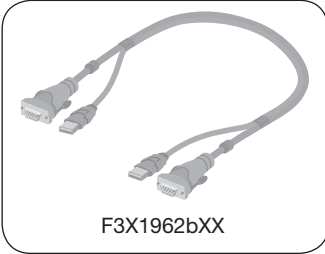
- **Global Power Adapter**

The Switch includes a global power adapter and interchangeable plugs, to allow for both domestic and international installations.³

²The 2- and 4-Port Switches require an optional Rack-Mount Kit for rack installation (Belkin part number F1D005).

³Includes AC plugs for the U.S., U.K., Europe, and Australia.

Equipment Requirements



Cables

Belkin highly recommends you use Belkin All-In-One USB KVM Cable Kits for your Switch to help ensure superior performance. These cables offer the highest quality possible to ensure optimal data and video transmission. One Cable Kit is required per connected computer.

All-In-One USB KVM Cable Kits:

F3X1962b06 – 6 ft. (1.8m)

F3X1962b10 – 10 ft. (3m)

F3X1962b15 – 15 ft. (4.6m)

Note: Due to USB limitations, the USB-cable length cannot exceed 15 feet (4.6m).

System Requirements

Operating-System (OS) Platforms

The Switch is compatible with computers running on, but not limited to, the following OS platforms:

- Windows® 2000
- Windows XP (Home/Professional)
- Windows 2003 Server
- Windows Vista®
- Red Hat® Linux® Desktop
- Red Hat Enterprise Linux WS
- Mac OS® X v10.3 and higher

Keyboards

- USB-compatible (including wireless keyboards)

Mice

- USB-compatible (including wireless or optical mice)

Monitors

- CRT and LCD with VGA support

1

2

3

4

5

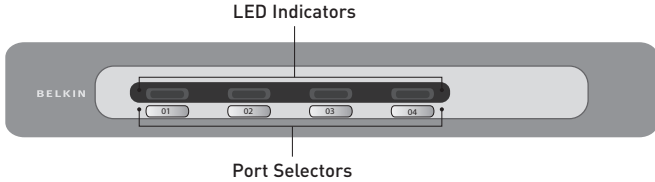
6

7

section

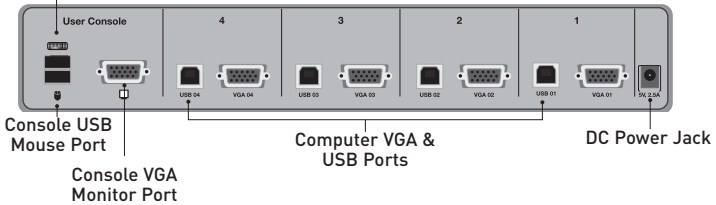
Unit Display Diagrams

Front View

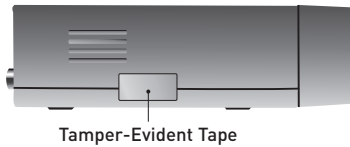


Back View

Console USB
Keyboard Port



Side View



(F1DN104U model shown)

IMPORTANT NOTICE: There should be one tamper-evident tape on each side of the Switch enclosure (total of two tapes). If both tapes are visible and do not appear to be disrupted, your Switch has not been opened or compromised since time of production. If for any reason one of the tapes is missing or appears disrupted, please call Belkin Technical Support at (800) 282-2355.

Specifications

Part No.:	F1DN102U, F1DN104U, F1DN108U
Enclosure:	Metal enclosure with high-impact plastic faceplate
Power Requirements:	5V DC, 2.5A (minimum) power adapter with center-pin-positive polarity*
AC Input:	100 to 240VAC
Interchangeable AC Plugs:	4 (U.S., U.K., Europe, Australia)
No. of Users Supported:	1
No. of Computers Supported:	2, 4, and 8 respectively for 2-, 4-, and 8-port models
Monitors Supported:	CRT and LCD (with VGA support)
Resolution Support:	Up to 1920x1440@75Hz
Console Keyboard Input:	USB Type A
Console Mouse Input:	USB Type A
Console Monitor Port:	HDDDB15 female (VGA)
CPU Keyboard/Mouse Ports:	USB Type B
CPU Monitor Ports:	HDDDB15 male (VGA)
Port Selectors:	2, 4, and 8 respectively for 2-, 4-, and 8-port models
LED Indicators:	2, 4, and 8 respectively for 2-, 4-, and 8-port models
Operating Temp:	32° to 104° F (0° to 40° C)
Storage Temp:	-4° to 140° F (-20° to 60° C)
Humidity:	0-80% RH, non-condensing
Warranty:	3 years
Dimensions:	(F1DN102U) 11 x 1.75 x 6 in. (279 x 45 x 150mm) (F1DN104U) 11 x 1.75 x 6 in. (279 x 45 x 150mm) (F1DN108U) 17.25 x 1.75 x 7.5 in. (438 x 45 x 190mm)
Weight:	(F1DN102U) 2.5 lbs. (1.1kg.) (F1DN104U) 2.5 lbs. (1.1kg.) (F1DN108U) 4.5 lbs. (2.0kg.)

Made in the USA of imported parts

*The Switch includes a 5-volt, 3-Amp power adapter, but only requires a minimum of 2.5 Amps.

Installation

Pre-Configuration

Where to place the Switch:

The enclosure of the Switch is designed for desktop or rack-mount configuration. The 8-Port Switch (F1DN108U) can be mounted to a standard 19-inch server rack using the included rack-mount brackets and screws. An optional Rack-Mount Kit (Belkin part number F1D005) is available for use with the 2- and 4-Port Switches.

Consider the following when deciding where to place the Switch:

- your proximity to the port selectors on the front of the Switch
- the lengths of the cables attached to your keyboard, monitor, and mouse
- the location of your computers in relation to your console
- the lengths of the cables you use to connect your computers to the Switch

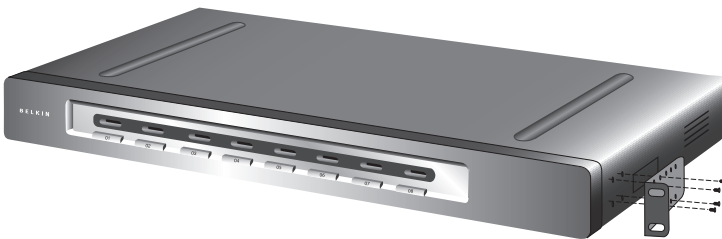
Warning: Avoid placing cables near fluorescent lights, air-conditioning equipment, or machines that create electrical noise (e.g., vacuum cleaners).

Step 1 | Mounting the Switch (optional)

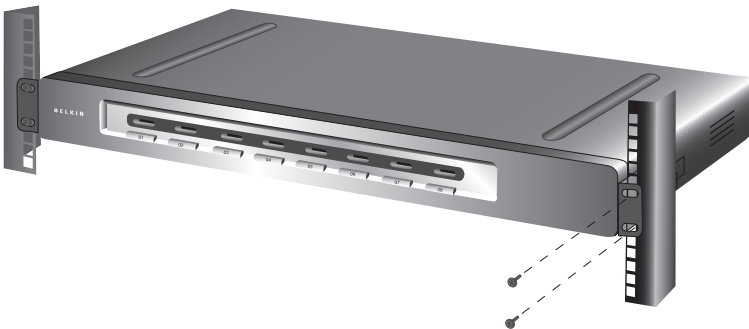
Bracket Installation (F1DN108U)

The 8-Port Switch includes adjustable mounting brackets ideal for installation in 19-inch racks. The mounting brackets feature three adjustment positions that allow you to set the Switch's face flush with the ends of the rails, or to extend the Switch past the front of the rails. Please follow these simple steps to achieve the desired adjustment.

- 1.1 Determine how far you would like the Switch to protrude from the rack. Select a bracket-hole scheme.
- 1.2 Attach the bracket to the side of the Switch using the Phillips screws provided. (Refer to diagram below.)



- 1.3 Mount the Switch to the rack rails. (Refer to diagram below.)



Your Switch is now mounted securely to the rack and you are ready to connect your console.

1

2

3

4

5

6

7

section

Bracket Installation (F1DN102U and F1DN104U)

The 2- and 4-Port Switches can be installed into a 19-inch rack using an optional Rack-Mount Kit, sold separately (Belkin part number F1D005).

- 1.1 Attach the Rack-Mount Bracket to the Switch using the Phillips screws provided. (Refer to diagram below.)



- 1.2 Mount the Switch to the rack rails. (Refer to diagram below.)



Your Switch is now mounted securely to the rack and you are ready to connect your console.

Step 2 | Connecting the Console to the Switch (required)

1

2

3

section

4

5

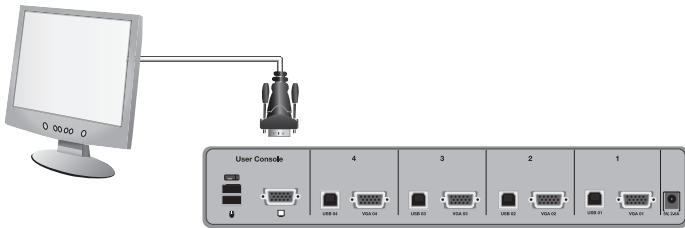
6

7

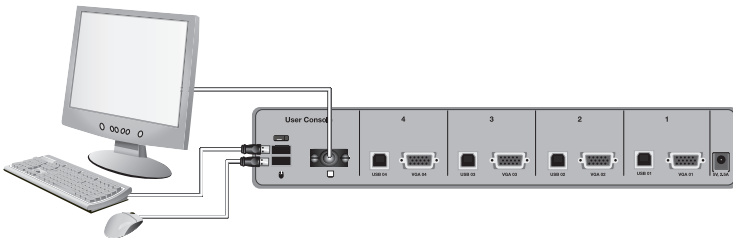
Warning: Before attempting to connect anything to the Switch or your computers, please ensure that all computer equipment and devices are powered off. Plugging and unplugging cables while computers are powered on may cause irreversible damage to the computers and/or the Switch. Belkin International, Inc., is not responsible for damage caused by your failure to do so.

Before you connect your console to the Switch, make sure that your USB keyboard and mouse work properly with all your computers (the Human Interface Device (HID) USB drivers are installed on all computers).

- 2.1 Connect your monitor VGA cable to the VGA port on the back of the Switch in the “User Console” section. (Refer to diagram below.)

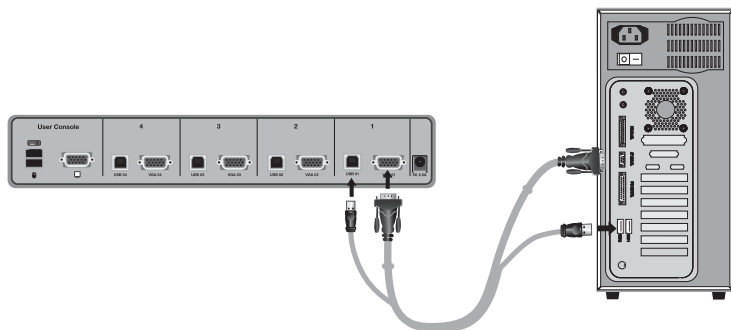


- 2.2 Connect your keyboard and mouse USB cables to the USB keyboard and mouse ports on the back of the Switch in the “User Console” section. (Refer to diagram below.)



Step 3 | Connecting Computers to the Switch (required)

- 3.1 Make sure all computers and the Switch are powered off.
- 3.2 Using the Belkin All-In-One USB KVM Cable Kit (F3X1962bXX), connect the male VGA connector to the monitor port on your computer. Then connect the female VGA connector to the CPU monitor port on the Switch labeled “VGA 01”. (Refer to diagram below.)
- 3.3 Using the Cable Kit, connect the USB Type A connector to an available USB port on your computer. Then connect the USB Type B connector to the USB port on the Switch labeled “USB 01”. (Refer to diagram below.)

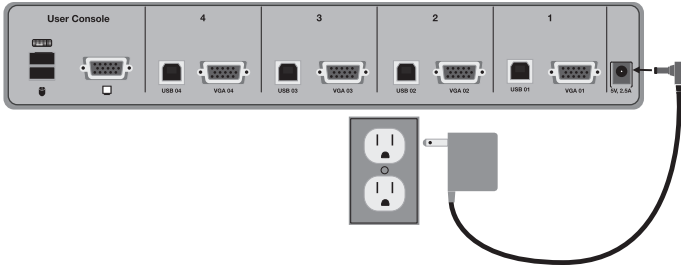


- 3.4 Repeat steps 2 and 3 for each additional USB computer you wish to connect.

Note: The Cable Kit must be connected directly to a free USB port on your computer, with no USB hubs or other devices in between.

Step 4 | Powering Up the Systems (required)

- 4.1 Attach the power adapter to the DC power jack labeled “5V, 2.5A” on the back of the Switch. Only use the power adapter supplied with the Switch. (Refer to diagram below.)



- 4.2 Power on your computers and your monitor. All computers can be powered on simultaneously.

Note: Your computers should recognize the Switch and automatically install the HID USB driver if necessary.

When you power on your computers, the Switch emulates both a mouse and keyboard on each port and allows your computers to boot normally. The computer connected to port “1” will be displayed on the monitor. Check to see that the keyboard, monitor, and mouse are working normally. Proceed to do this with all occupied ports to verify that all computers are connected and responding correctly. If you encounter an error, check your cable connections for that computer and reboot. If the problem persists, please refer to the Troubleshooting section in this User Manual.

Selecting a Computer Using Port Selectors

Now that you have connected your console and computers to the Switch, it is ready for use. You can select which computer you wish to control by pressing the corresponding port selector on the front of the Switch. The LED will illuminate to indicate which computer (or port) is currently selected. It takes approximately 1–2 seconds for the video signal to refresh after switching computers. Re-synchronization of the mouse and keyboard signals also occurs. This is normal operation and ensures that proper synchronization is established between the console and the connected computers.⁵

Once you press a port selector, the Switch immediately disables the connection between your console and the previously selected computer, and establishes a new connection between your console and the new computer selected. Keyboard and mouse inputs can only be sent to the selected computer, and video outputs can only be received from the selected computer. The Switch also prevents any data transfer between connected computers, ensuring the security of your computers.

Please note that the default port at power-up is port one. In case of a power failure or if the power is cycled, the Switch will default to port one.

⁵**Note:** It may take longer for your mouse and keyboard to re-synchronize when the computer is recovering (or initializing) from Standby, Hibernate, or Sleep modes.

Frequently Asked Questions

What does NIAP Common Criteria validation to EAL 4 mean?

To learn more about NIAP Common Criteria and EAL 4, visit <http://niap.nist.gov/cc-scheme/nsttisp-faqs.html>.

1

2

What do I do if I find that the tamper-evident tape on the Switch has been removed or disrupted?

Please call Belkin Technical Support at (800) 282-2355 immediately. The KVM Switch's circuitry may have been compromised.

3

4

How does the Switch allow the user to switch between computers?

The Switch only supports one method of port selection. The user can access the desired computer by pushing the port selectors.

5

6

How far can the Switch be from my computer?

The Switch can be located up to 15 feet (4.6m) away from your computer due to USB-cable limitation.

7

Do I have to install software to use the Switch?

No, the Switch does not require any software to be installed in your computers.

Can I use the Switch with a computer that does not support USB?

No, the Switch only works with USB-capable computers.

Does the Switch require an AC adapter?

Yes, the Switch requires a 5-volt DC, 2.5-Amp (minimum) power adapter in order to function properly.

Does the Switch support Linux?

Yes, the Switch works with Red Hat Linux and some Linux kernels configured for USB support.

Does the Switch support Microsoft® IntelliMouse®?

The Switch supports mice from Microsoft, Logitech®, Kensington®, etc., and Belkin. Please contact Belkin Technical Support at (800) 282-2355 for compatibility issues you may experience.

Troubleshooting

General

Problem:

My computer does not boot when connected to the Switch but works fine when I connect my keyboard, video, and mouse directly to my computer.

Solution:

- Make sure that the All-In-One USB KVM Cable Kit is connected tightly between the Switch and the computer.

Video

Problem:

I am getting ghosting, shadowing, or fuzzy images on my monitor.

Solution:

- Check that all video cables are inserted properly to the Switch, computer, and monitor.
- Check that the monitor you are using supports the resolution and refresh-rate setting on your computer.
- Lower the video resolution of your monitor.
- Check that the video-cable length does not exceed 25 feet (7.6m).
- Check that the graphics card you are using supports the resolution and refresh-rate setting on your computer.
- Connect the monitor directly into the computer you are having trouble with to see if the problem still appears.

Problem:

I am getting a black screen on my monitor.

Solution:

- Check that all video cables are inserted properly.
- Check that there is proper voltage available to the power adapter and that it is inserted correctly.
- Connect your monitor directly to the computer to verify that your monitor is functioning properly.

Keyboard

1

Problem:

The computer does not detect my keyboard, or my keyboard does not work when I switch computers or reboot.

2

Solution:

- Check that the keyboard you are using is connected properly to the Switch.
- Check that the USB cable between the Switch and the computer is completely connected.
- Try connecting to a different USB port on the computer.
- Make sure the keyboard works when directly plugged into the computer (the HID USB driver is installed on the computer). Rebooting may be necessary when trying this.
- If you are using keyboard software that was included with your keyboard, uninstall it and then reinstall.
- If the computer is coming out of standby mode, allow up to one minute to regain mouse function.
- Try a different keyboard.

3

4

5

6

7

section

Problem:

Some of the keys on my keyboard are not functioning properly when I use a Mac® computer.

Solution:

- If you are using a PC keyboard on a Mac system, a few of the option keys on your PC keyboard may be reversed. All major keys will function as labeled.

Mouse

Problem:

The computer does not detect my mouse, or my mouse does not work when I switch computers or reboot.

Solution:

- Check that the mouse you are using is connected properly to the Switch.
- Check that the USB cable between the Switch and the computer is completely connected.
- Try connecting to a different USB port on the computer.
- Make sure the mouse works when directly plugged into the computer (the HID USB driver is installed on the computer). Rebooting may be necessary when trying this.
- If you are using a mouse driver that was included with your mouse, uninstall it and install the standard Microsoft mouse driver.
- If the computer is coming out of standby mode, allow up to one minute to regain mouse function.
- Try a different mouse.

FCC Statement

Declaration of Conformity with FCC Rules for Electromagnetic Compatibility

We, Belkin International, Inc., of 501 West Walnut Street, Compton, CA 90220, declare under our sole responsibility that the products:

F1DN102U, F1DN104U, F1DN108U,

to which this declaration relates:

Comply with Part 15 of the FCC Rules. Operation is subject to the following two conditions:

(1) this device may not cause harmful interference, and (2) this device must accept any interference received, including interference that may cause undesired operation.

CE Declaration of Conformity

We, Belkin International, Inc., declare under our sole responsibility that the products F1DN102U, F1DN104U, F1DN108U, to which this declaration relates, are in conformity with Emissions Standard EN55022 and with Immunity Standard EN55024, LVP EN61000-3-2, and EN61000-3-3.

ICES

This Class B digital apparatus complies with Canadian ICES-003. Cet appareil numérique de la classe B est conforme à la norme NMB-003 du Canada.

Belkin International, Inc., Limited 3-Year Product Warranty

What this warranty covers.

Belkin International, Inc. ("Belkin") warrants to the original purchaser of this Belkin product that the product shall be free of defects in design, assembly, material, or workmanship.

What the period of coverage is.

Belkin warrants the Belkin product for three years.

What will we do to correct problems?

Product Warranty.

Belkin will repair or replace, at its option, any defective product free of charge (except for shipping charges for the product).

What is not covered by this warranty?

All above warranties are null and void if the Belkin product is not provided to Belkin for inspection upon Belkin's request at the sole expense of the purchaser, or if Belkin determines that the Belkin product has been improperly installed, altered in any way, or tampered with. The Belkin Product Warranty does not protect against acts of God such as flood, lightning, earthquake, war, vandalism, theft, normal-use wear and tear, erosion, depletion, obsolescence, abuse, damage due to low voltage disturbances (i.e., brownouts or sags), non-authorized program, or system-equipment modification or alteration.

1

2

3

4

5

6

7

section

How to get service.

To get service for your Belkin product you must take the following steps:

1. Contact Belkin International, Inc., at 501 W. Walnut St., Compton CA 90220, Attn: Customer Service, or call (800)-223-5546, within 15 days of the Occurrence. Be prepared to provide the following information:
 - a. The part number of the Belkin product.
 - b. Where you purchased the product.
 - c. When you purchased the product.
 - d. Copy of original receipt.
2. Your Belkin Customer Service Representative will then instruct you on how to forward your receipt and Belkin product and how to proceed with your claim.

Belkin reserves the right to review the damaged Belkin product. All costs of shipping the Belkin product to Belkin for inspection shall be borne solely by the purchaser. If Belkin determines, in its sole discretion, that it is impractical to ship the damaged equipment to Belkin, Belkin may designate, in its sole discretion, an equipment repair facility to inspect and estimate the cost to repair such equipment. The cost, if any, of shipping the equipment to and from such repair facility and of such estimate shall be borne solely by the purchaser. Damaged equipment must remain available for inspection until the claim is finalized. Whenever claims are settled, Belkin reserves the right to be subrogated under any existing insurance policies the purchaser may have.

How state law relates to the warranty.

THIS WARRANTY CONTAINS THE SOLE WARRANTY OF BELKIN. THERE ARE NO OTHER WARRANTIES, EXPRESSED OR, EXCEPT AS REQUIRED BY LAW, IMPLIED, INCLUDING THE IMPLIED WARRANTY OR CONDITION OF QUALITY, MERCHANTABILITY OR FITNESS FOR A PARTICULAR PURPOSE, AND SUCH IMPLIED WARRANTIES, IF ANY, ARE LIMITED IN DURATION TO THE TERM OF THIS WARRANTY.

Some states do not allow limitations on how long an implied warranty lasts, so the above limitations may not apply to you.

IN NO EVENT SHALL BELKIN BE LIABLE FOR INCIDENTAL, SPECIAL, DIRECT, INDIRECT, CONSEQUENTIAL OR MULTIPLE DAMAGES SUCH AS, BUT NOT LIMITED TO, LOST BUSINESS OR PROFITS ARISING OUT OF THE SALE OR USE OF ANY BELKIN PRODUCT, EVEN IF ADVISED OF THE POSSIBILITY OF SUCH DAMAGES.

This warranty gives you specific legal rights, and you may also have other rights, which may vary from state to state. Some states do not allow the exclusion or limitation of incidental, consequential, or other damages, so the above limitations may not apply to you.

1

2

3

4

5

6

7

section