

APPLIES TO:

- F1PI242EGau

TABLE OF CONTENTS:-

| | |
|--------------------------------------|---|
| Enable Wireless on your Modem/Router | 1 |
| Setup Wireless Encryption | 3 |
| Wireless Security Information | 3 |
| 64 Bit WEP | 4 |
| 128 Bit WEP | 6 |
| WPA | 8 |
| Connecting to the Wireless Network | 9 |

Before you begin you will need:

- Belkin Wireless / VoIP unit
- Power cable
- Network cable

Hardware check:

- Your computer is switched on
- The Wireless / VoIP unit is switched on
- Network cable connected from computer to the Wireless / VoIP unit

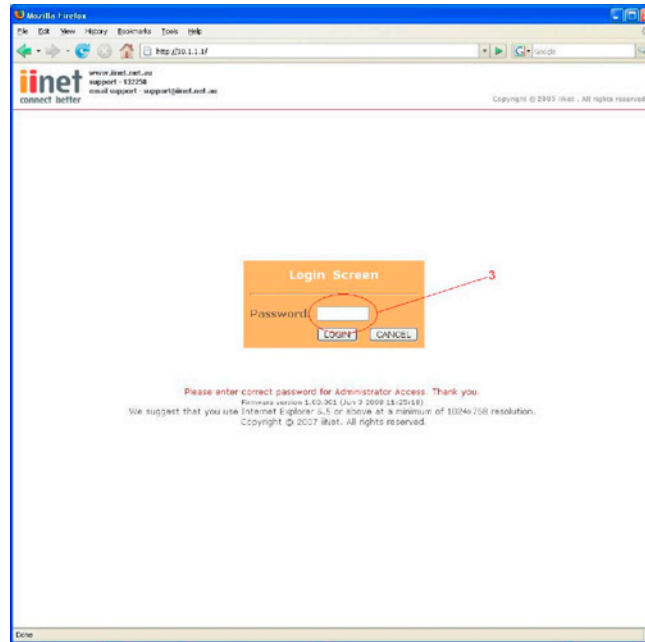


F1PI242EGau

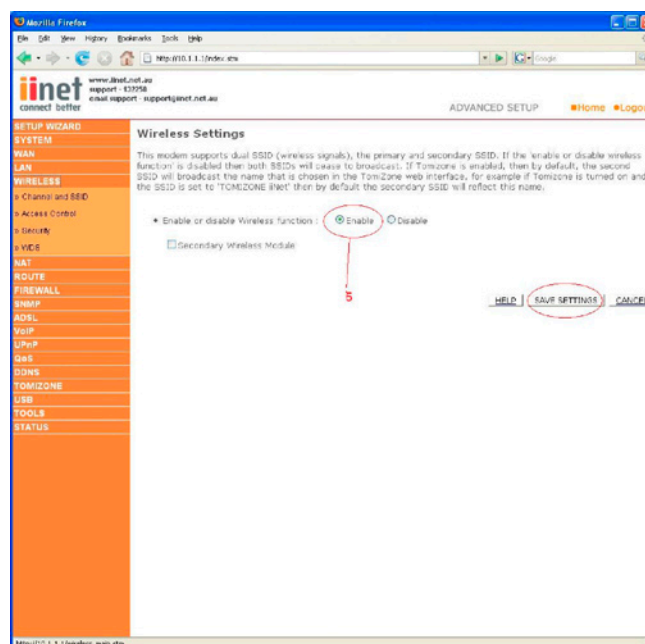
Enable wireless and wireless security on your Belkin VoIP modem/router.

STEPS:

- 1) Open your web browser (Internet Explorer, Mozilla FireFox, Safari etc)
- 2) In the Address Bar, delete any text and type in 10.1.1.1 or [Click Here](#) to open the page directly



- 3) Type in your current password (default password = admin) then click LOGIN
- 4) On the left hand side of the screen click Advanced Setup
- 5) You will now be presented with more options in the menu on the left. Click Wireless then click Enable Wireless Function and click Save Settings



Wireless is now enabled. We strongly recommend that you setup Wireless Security to help protect your wireless network against unauthorised use.

If you like to setup Wireless Security, please follow the steps below.

| WIRELESS SECURITY INFORMATION | | | |
|-------------------------------|---|----------------------------------|--|
| Encryption Type | Pros | Cons | Recommended usage |
| 64 Bit WEP | Most compatible form of encryption Easy to setup and manage | Least secure | Older computers and wireless adapters (Windows 98/ME/2000 &/or 802.11b Wireless Cards) Home users |
| 128 Bit WEP | More secure than 64 Bit, yet still widely supported by wireless cards | Long network key (26 Characters) | Apple Macintosh /Office use |
| WPA | Easy to setup and more secure form of encryption | Limited support | Windows XP (Service Pack 2) Later model wireless cards |
| WPA2 | Easy to setup and most secure form of encryption | Limited support | Microsoft WPA2 Patch Windows XP (Service Pack 3) Mac Computers |

Click the type of security you wish to setup:-

- [64 Bit WEP](#)
- [128 Bit WEP](#)
- [WPA](#)
- [WPA2](#)

WPA Information:

In order to use WPA and/or WPA2, you will need to ensure that:-

You have Windows XP SP3 or the latest WPA2 patch for SP2 installed & your wireless card supports WPA and/or WPA2

[Click here to download Service Pack 3 for Windows XP](#)

[Click here to download WPA2 Security patch for Windows XP SP2](#)

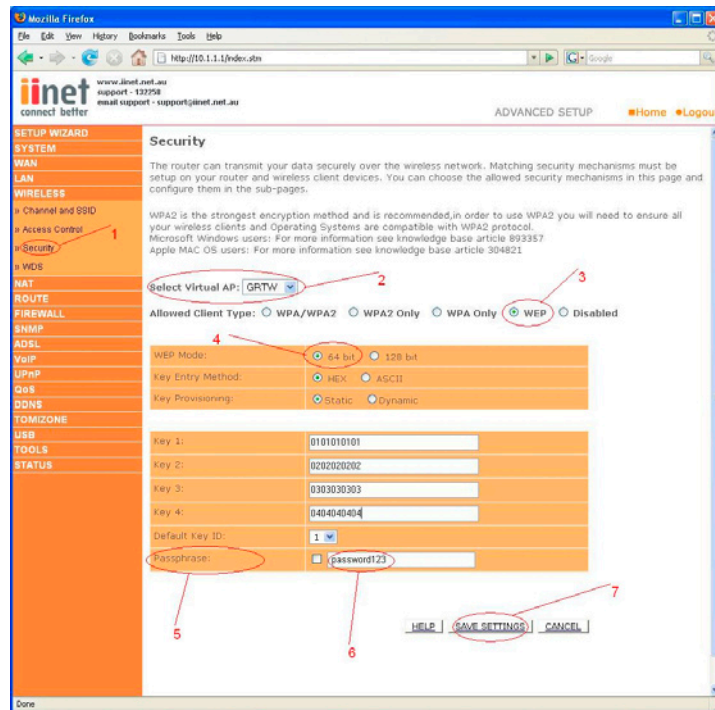
Or visit <http://www.microsoft.com>



F1PI242EGau

64 Bit WEP:-

- 1) Under Wireless click Security
- 2) Leave Virtual AP as Default
- 3) Click WEP
- 4) Click 64 Bit for WEP Mode leave all other settings as default



- 5) Place a tick in the Passphrase field
- 6) In the space provided in Passphrase, create a password – this can be any combination of letters and numbers
- 7) Click Save Settings

Write down the characters in Key 1 – this is now your 'Network Key' or 'Encryption Key'

NB. There are ten (10) characters in total.

This is the 'key' that will be required to be entered on your wireless PC. When you setup your wireless, it will ask you to type in a 'Network Key' or 'Encryption Key'.

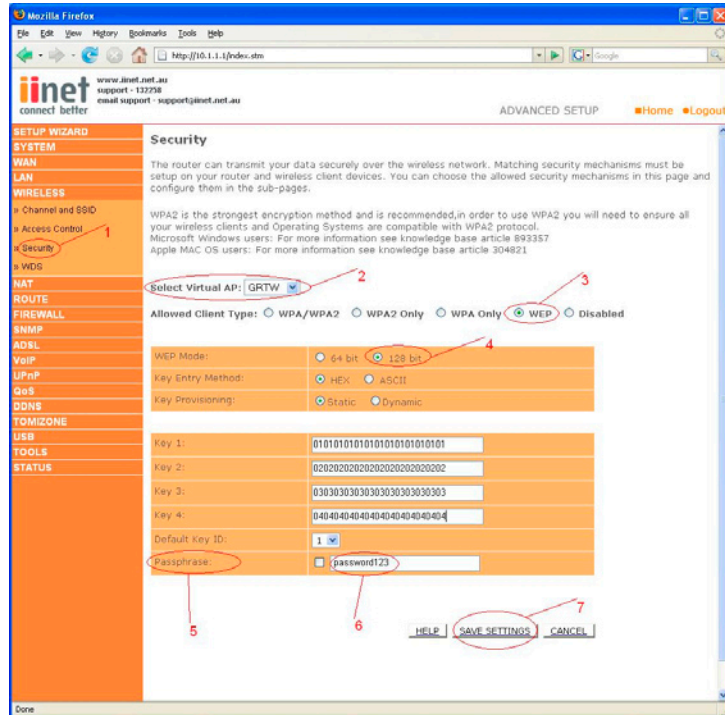
[Click here for information on how to connect to the Wireless Network.](#)



F1PI242EGau

128 Bit WEP:-

- 1) Under Wireless click Security
- 2) Leave Virtual AP as Default
- 3) Click WEP
- 4) Click 128 Bit for WEP Mode leave all other settings as default



- 5) Place a tick in the Passphrase field
- 6) In the space provided in Passphrase, create a password – this can be any combination of letters and numbers
- 7) Click Save Settings

Write down the characters in Key 1 – this is now your 'Network Key' or 'Encryption Key'

NB. There are twenty six (26) characters in total.

This is the 'key' that will be required to be entered on your wireless PC. When you setup your wireless, it will ask you to type in a 'Network Key' or 'Encryption Key'.

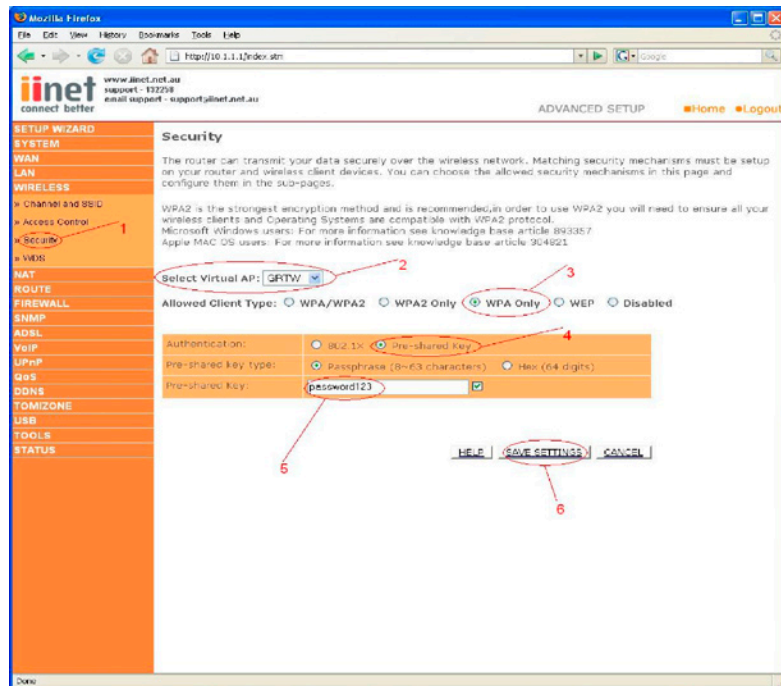
[Click here for information on how to connect to the Wireless Network.](#)



F1PI242EGau

WPA:-

- 1) Under Wireless click Security
- 2) Leave Virtual AP as Default
- 3) Click WPA Only
- 4) Authentication is Pre-Shared Key – leave all other settings as default
- 5) In the space provided in Pre-shared Key, create a password – minimum of eight (8) characters, it can be any combination of numbers and letters



- 6) Click Save Settings
- 7) Ensure that WPA is still enabled. The password you created earlier is now your 'Network Key' or 'Encryption Key'

This is the 'key' that will be required to be entered on your wireless PC. When you setup your wireless, it will ask you to type in a 'Network Key' or 'Encryption Key'.

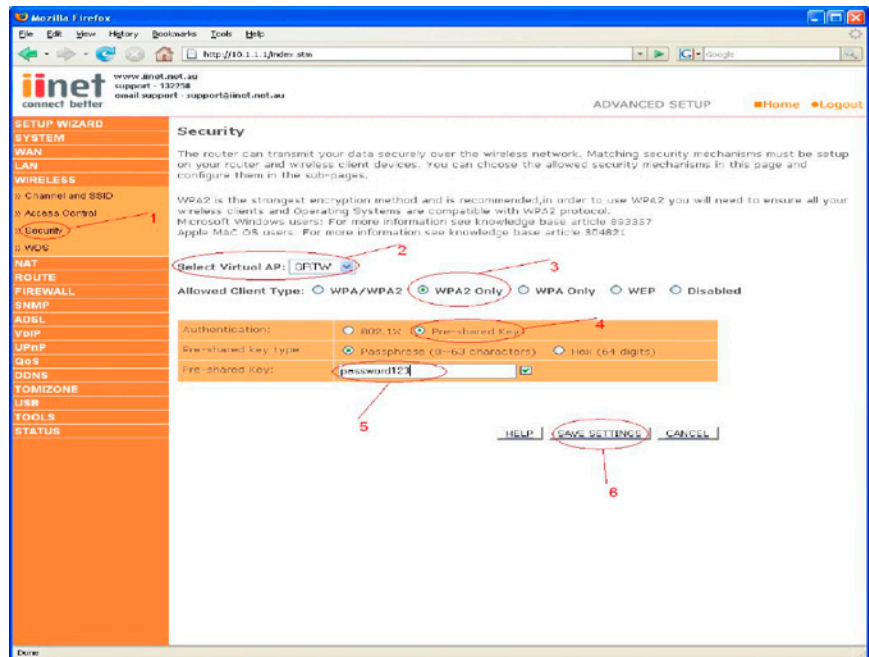
[Click here for information on how to connect to the Wireless Network.](#)



F1PI242EGau

WPA2:-

- 1) Under Wireless click Security
- 2) Leave Virtual AP as Default
- 3) Click WPA2 Only
- 4) Authentication is **Pre-Shared Key** – leave all other settings as default



- 5) In the space provided in Pre-shared Key, create a password – minimum of eight (8) characters, it can be any combination of numbers and letters
- 6) Click Save Settings
- 7) Ensure that WPA is still enabled. The password you created earlier is now your 'Network Key' or 'Encryption Key'

This is the 'key' that will be required to be entered on your wireless PC. When you setup your wireless, it will ask you to type in a 'Network Key' or 'Encryption Key'.

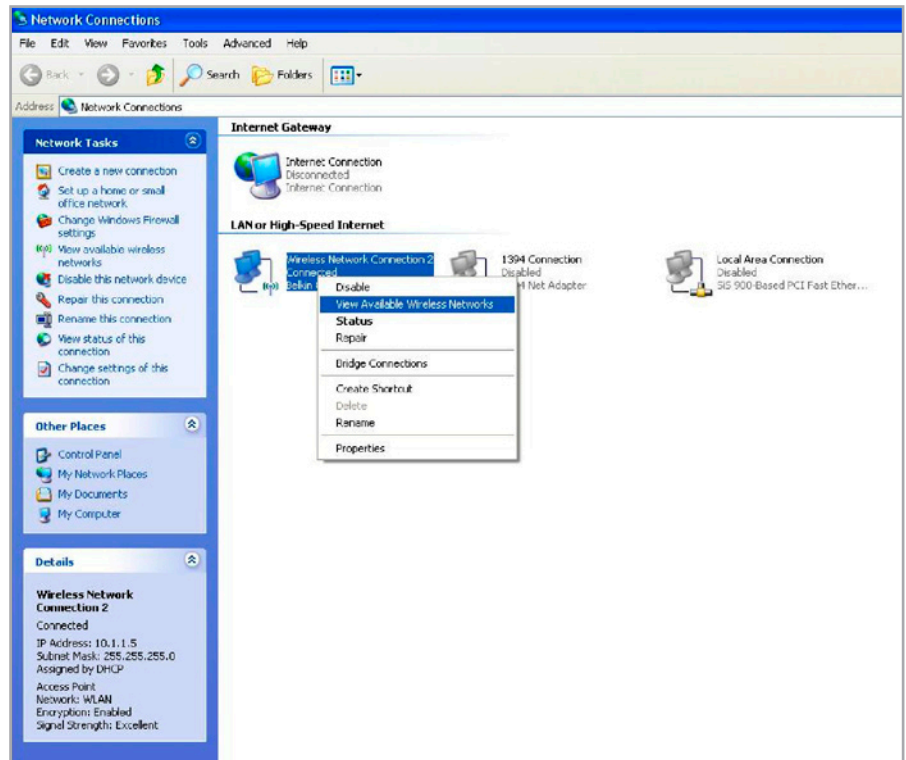
[Click here for information on how to connect to the Wireless Network.](#)



F1PI242EGau

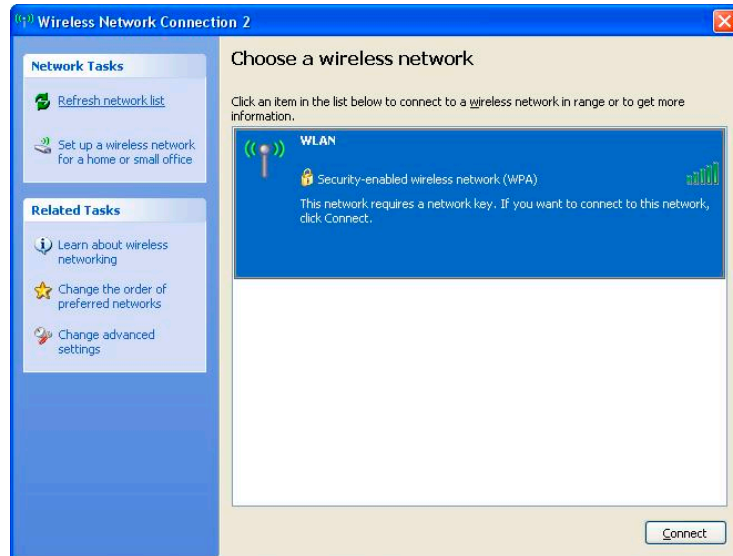
Connecting to the Wireless Network using Wireless Zero Configuration

- 1) If you are using a laptop or notebook with a built in wireless connection, make sure the Wireless Switch and/or Wireless Button on your computer is turned on. (Please refer to the documentation which came with your computer for further details)
- 2) Open **Control Panel**, select **Network Connections**. (If you do not have Network Connections select **Network and Internet Connections**, then click **Network Connections**).
- 3) Right click on **Wireless Network Connection**, select **Properties**
- 4) Click **Wireless Networks**, make sure there is a tick in 'Use Windows to configure my wireless network settings' and click OK.
- 5) Right click on Wireless Network Connection again and select **View Available Wireless Networks**



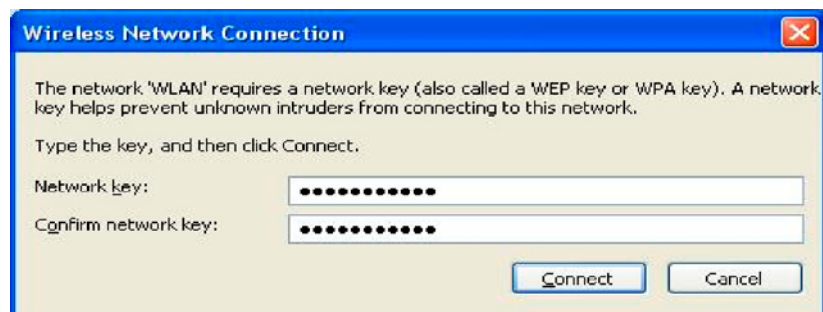
F1PI242EGau

- 6) Select your network from the list and click Connect



- 7) If you have encryption enabled – it will prompt you to enter your Network Key. In the Network Key field type in the network key you wrote down when setting up encryption in the router.

- 8) Re-enter the key next to Confirm Network Key and click Connect.



- 9) You should now be connected to your wireless network.

For further assistance setting up non-Belkin wireless cards (including laptops with built-in wireless) you will need to contact the appropriate manufacturer. If you require further assistance with a Belkin Wireless Card, please contact Belkin Technical Support on 1800 BELKIN.



F1PI242EGau