

Installation for the F5U004 in Windows 2000

If you Downloaded the Software off the website, it's a compressed file and needs to be unzipped before running this setup.

Steps:

1. Connect the direct connect to your PC. This window Should Appear.



2. Search for a suitable driver... Should already be selected Go ahead and Click Next.



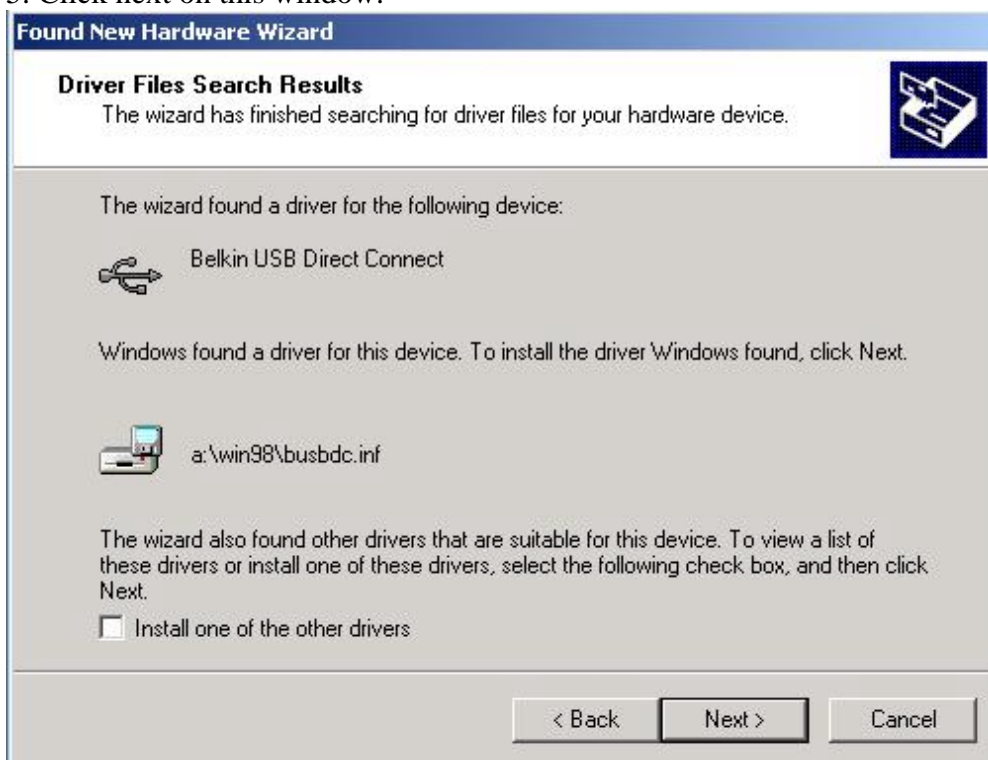
3. Check Specify a Location and uncheck everything else and click next.



4. Type A:\win98 and click next



5. Click next on this window.



6. Click Finish.



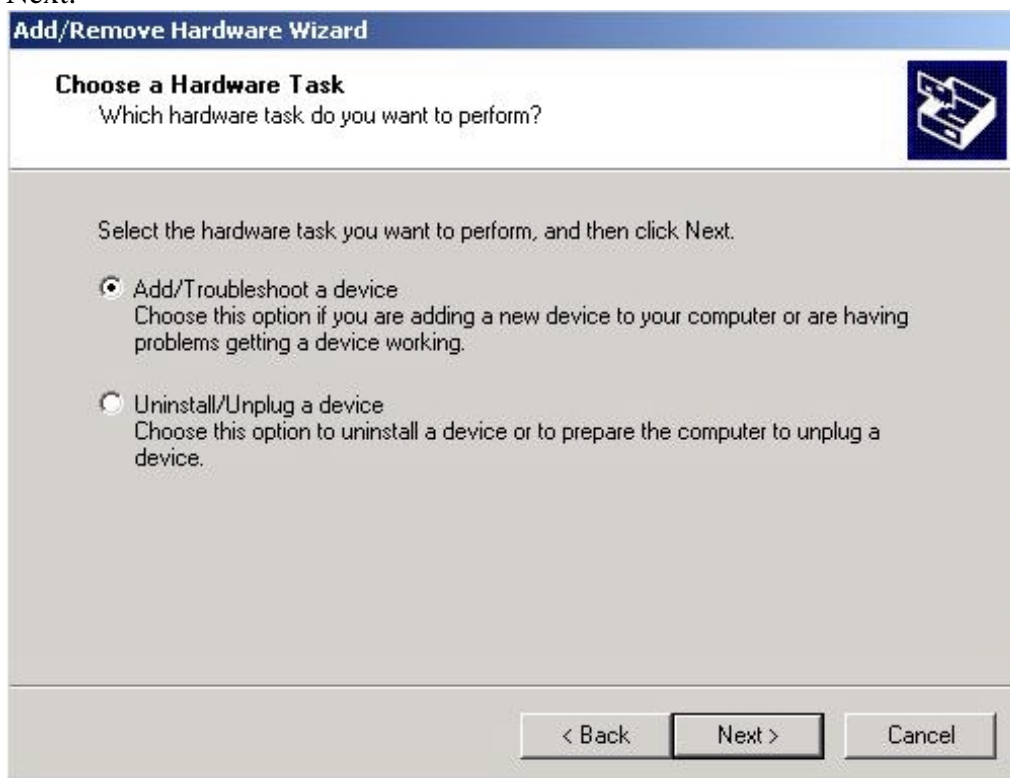
7. After installing the software, you will then need to install the Belkin Network Adapter on to your system. By doing this, you will have to go to your control Panel (Start/Setting/Control Panel. And select Add/Remove Hardware by double clicking the Icon.



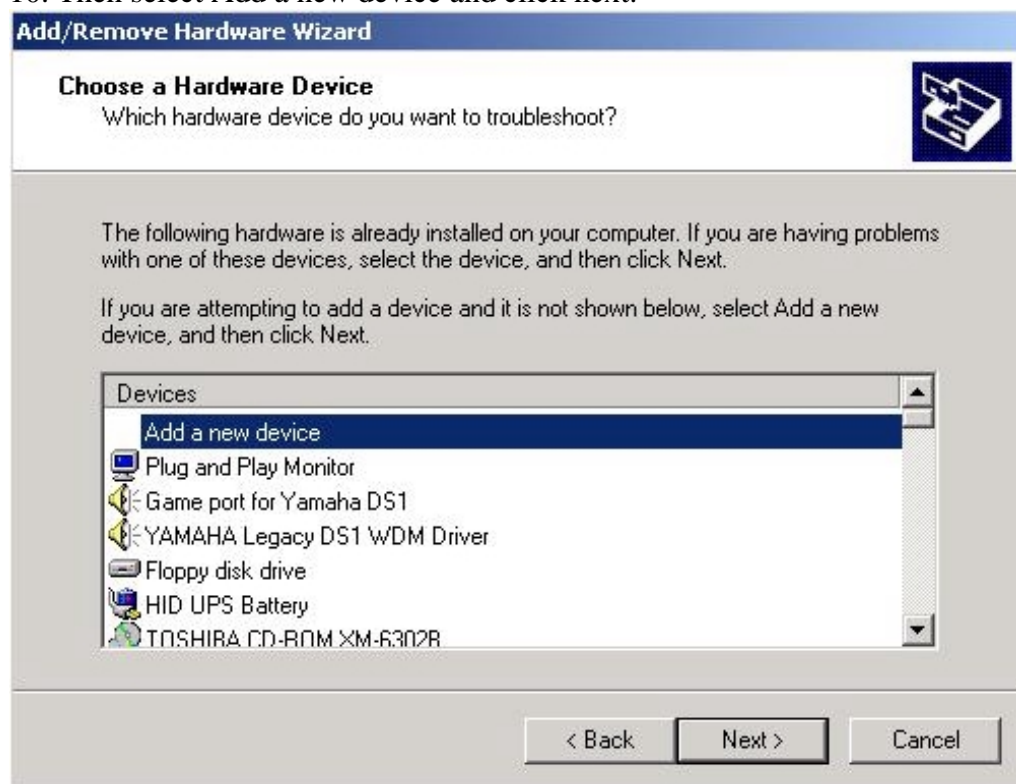
8. Then Click Next.



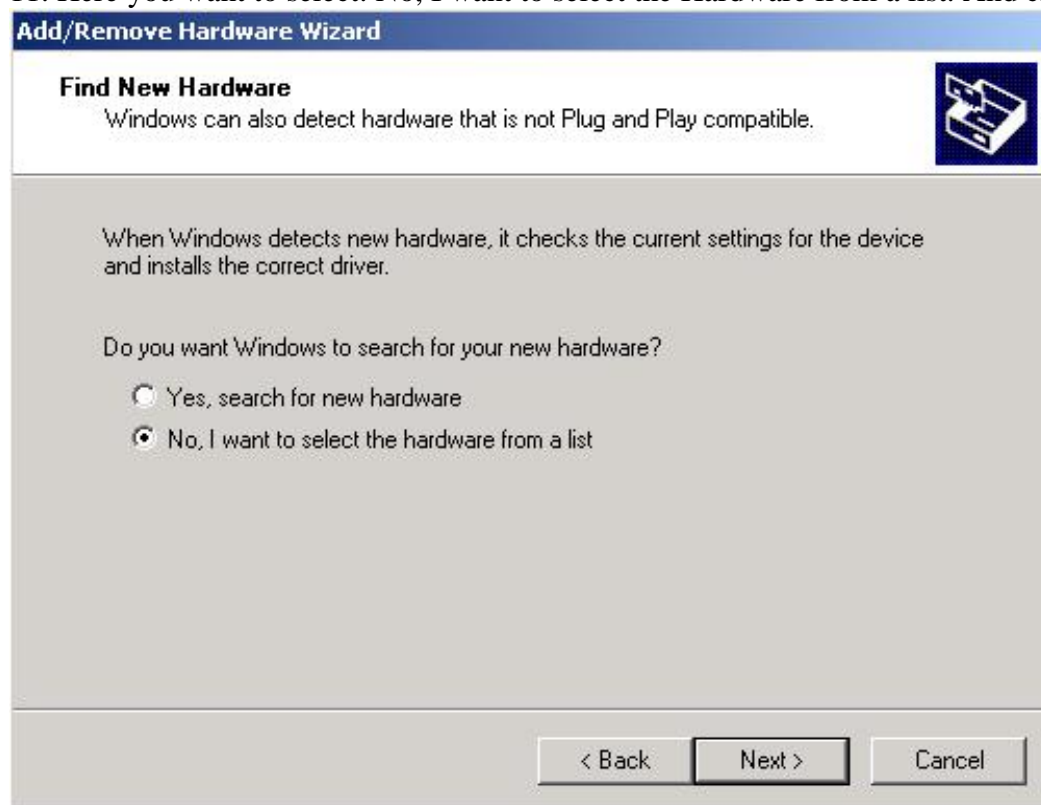
9. Add/Troubleshoot a Device should already be selected. If its not, select it and click Next.



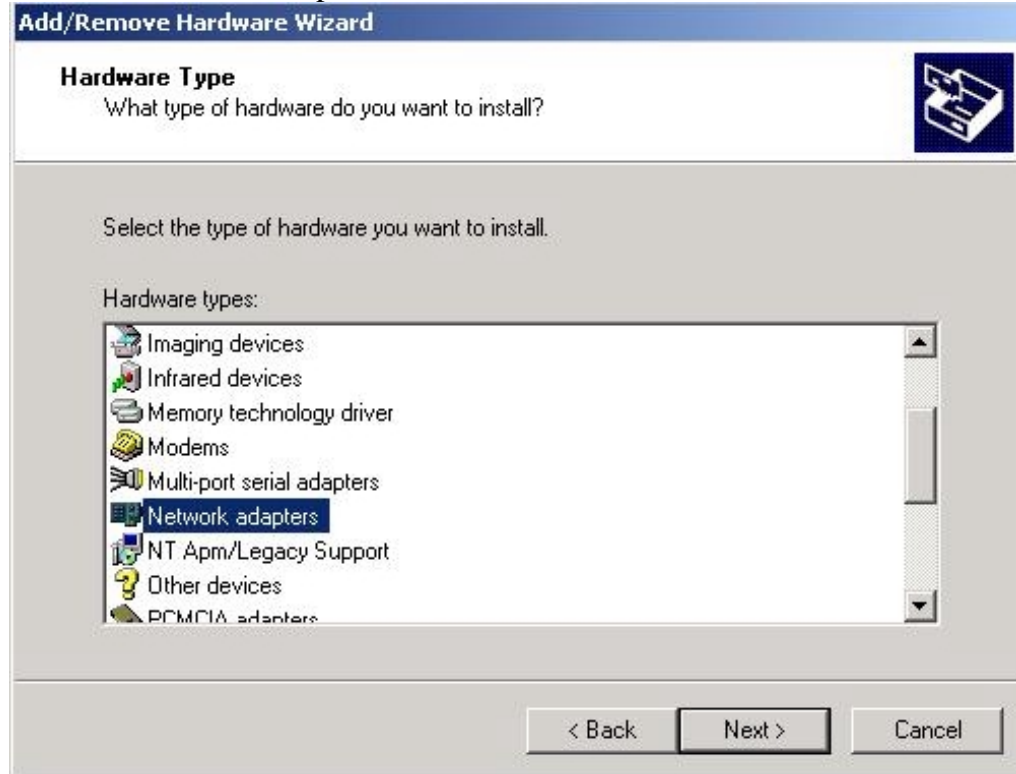
10. Then select Add a new device and click next.



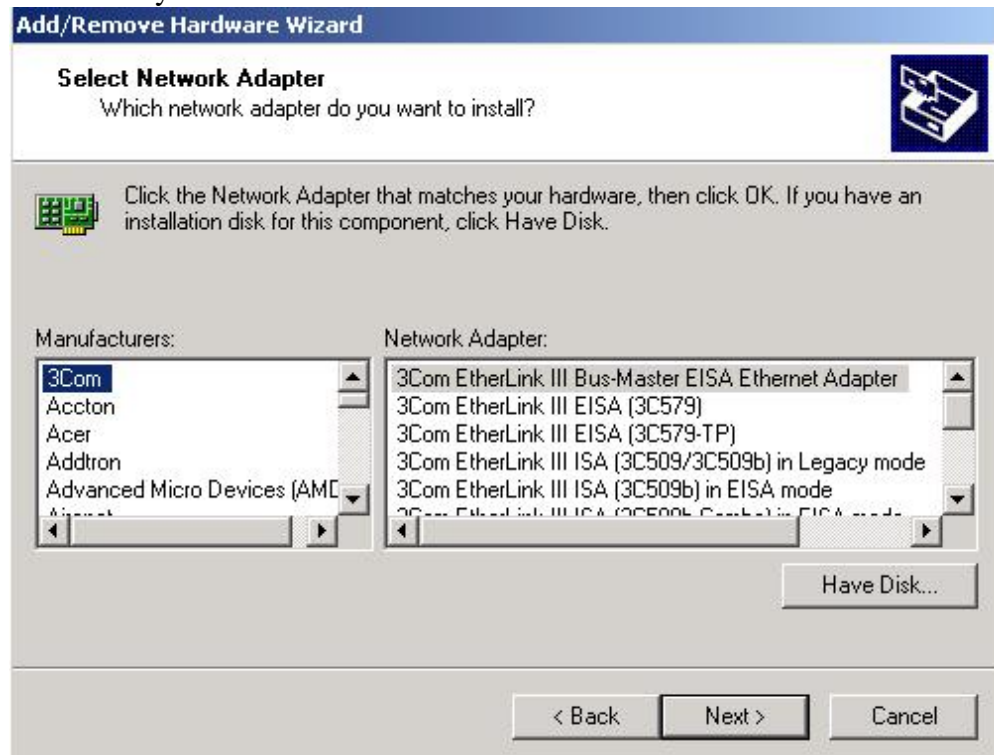
11. Here you want to select: No, I want to select the Hardware from a list. And click next.



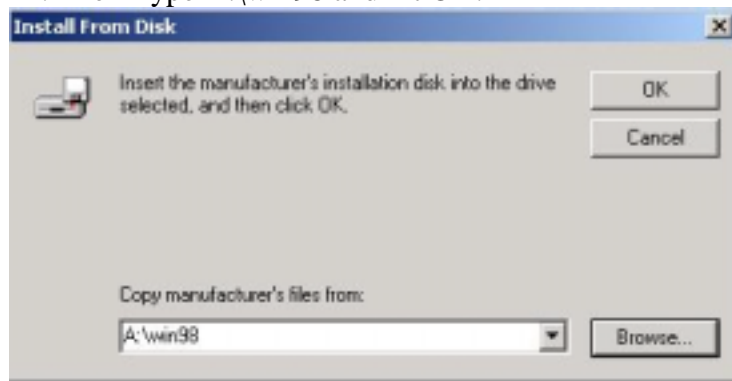
12. Select Network Adapter and click next.



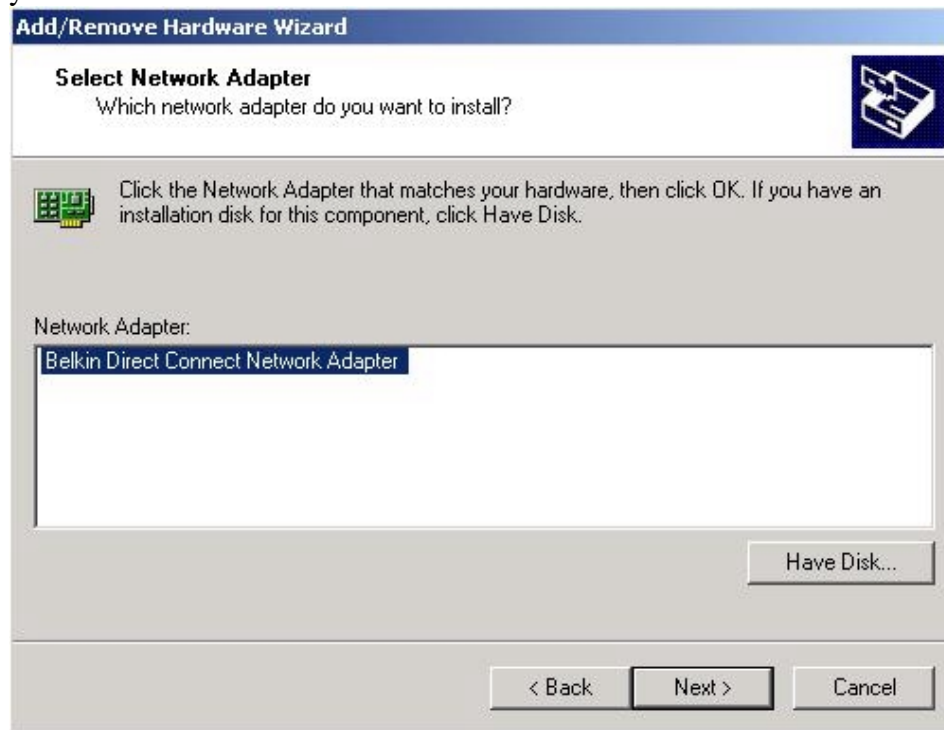
13. In here you want to select: Have Disk.



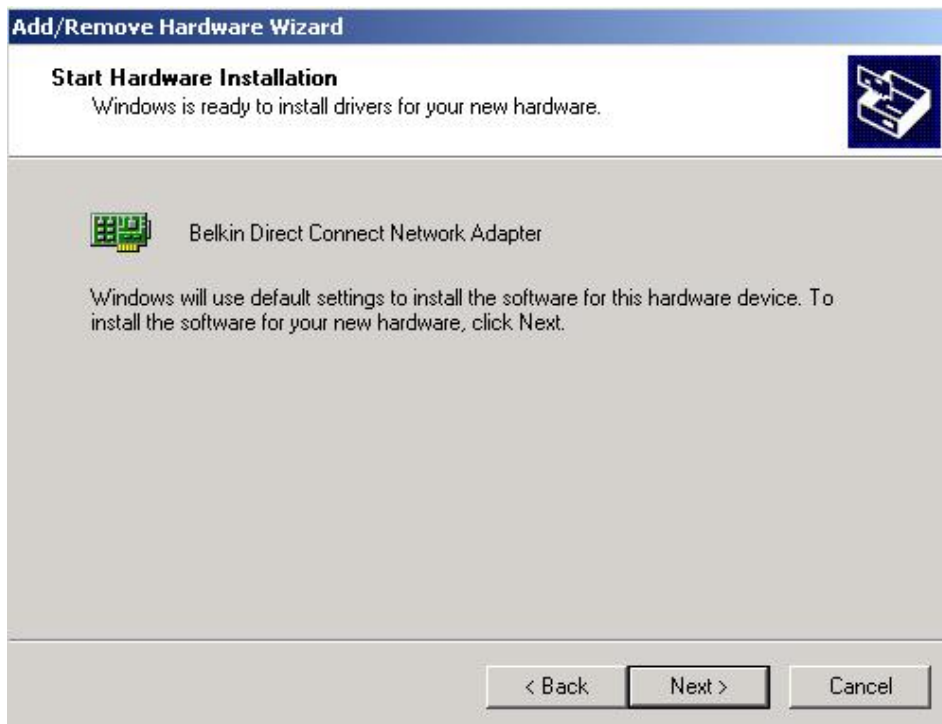
14. Then Type A:\win98 and hit OK.



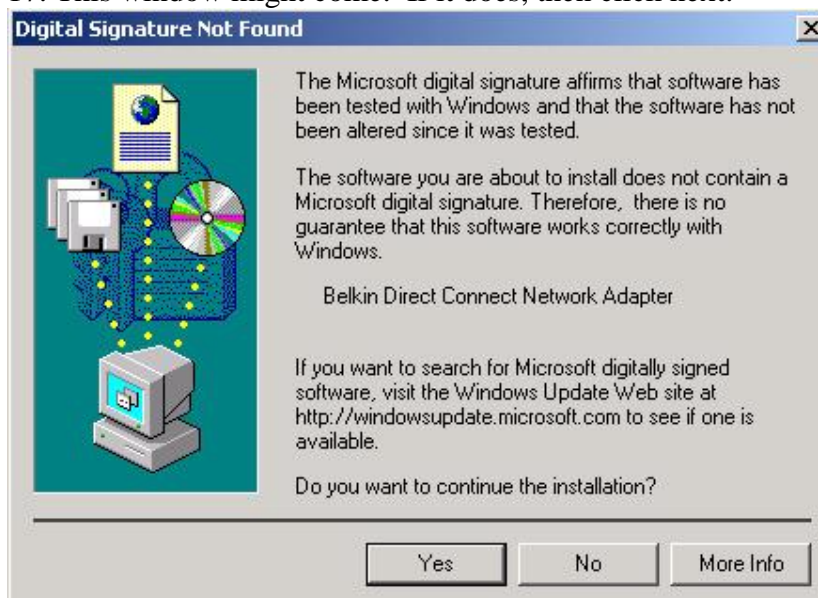
15. It should then bring to this windows again but have our adapter as an option. Here you select it and Hit next.



16. Hit Next.



17. This window might come. If it does, then click next.



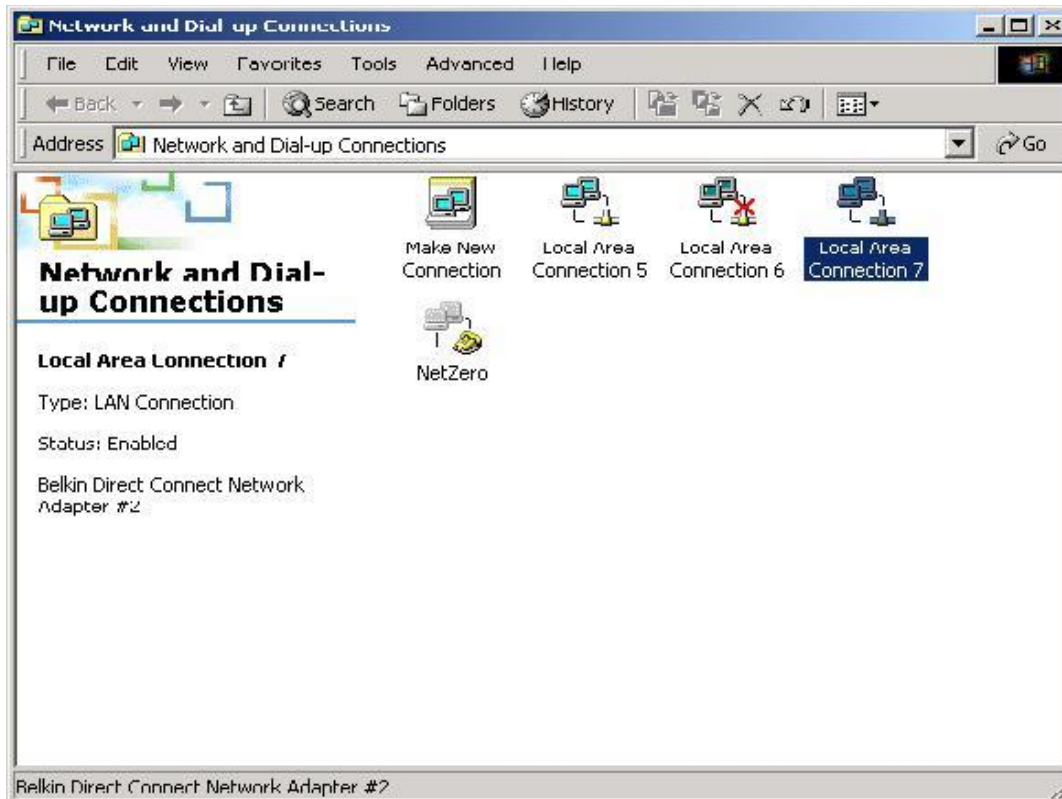
18. Hit Finish.



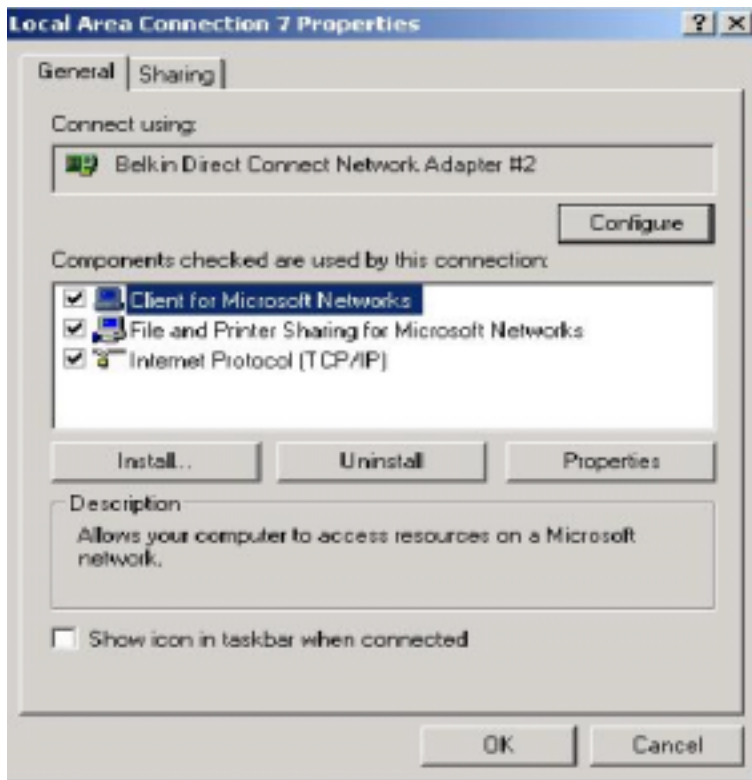
Now your USB Direct Connect should now be correctly installed.

19. Now it's time to set up your Network configuration. To do this, first go to My Network Places Properties by Right clicking on the My Network Place Icon on your desktop.

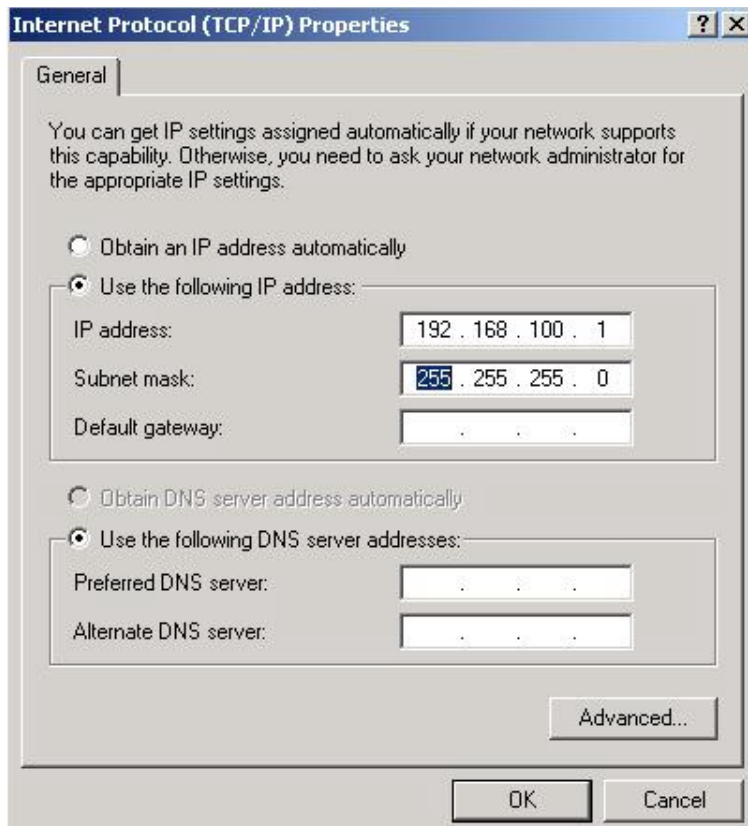
20. Then select your "Local Area Connection" Icon. If you have many there to choose from, It should be the one with number next to it. In this example it "Local Area Connection 7". Yours may be different. When you determine which one is yours Right click on it and go to Properties.



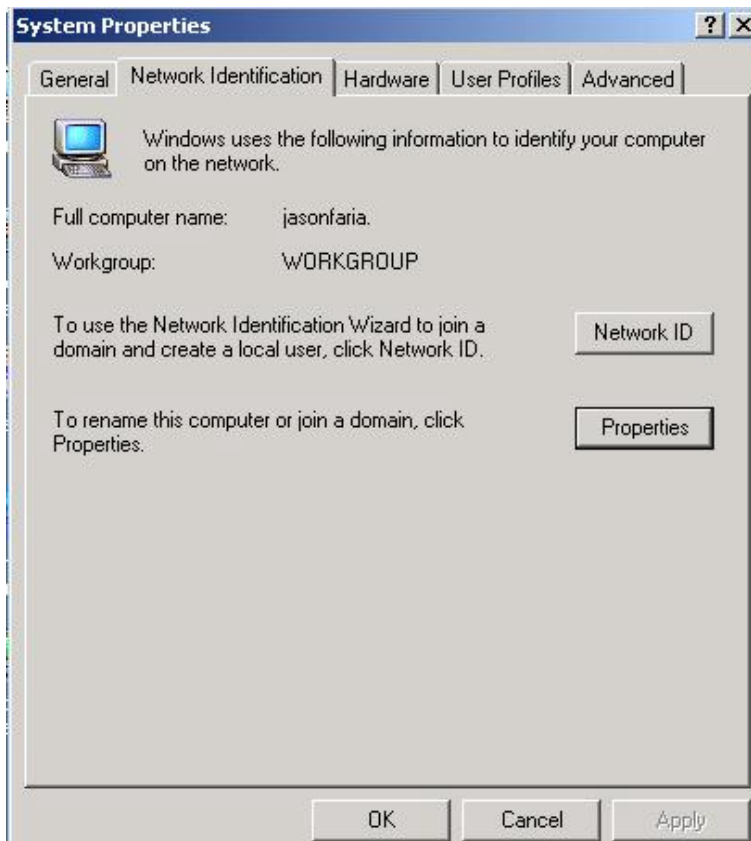
21. Make sure that under connect using, it says “Belkin Direct Connect Network Adapter”. If it does not, then that means you did not select the correct one under my network places Properties in step 19 and 20.
22. Now need to make sure the all the boxes in the list below check marks in them.
23. Then Double left click on “Internet Protocol (TCP/IP)”



24. Here you need to set your IP Address and Subnet Mask. It might be set to Obtain Automatically. If it is then select Use the following IP address and in the Box below it type your IP address. We recommend using 192.168.?.?. The first three sections of the address should be the same but the last section must be different between. (For Example Computer 1 is 192.168.100.1 and Computer 2 is 192.168.100.2)
25. Then Set your Subnet Mask to 255.255.255.0 And hit ok.
26. Now you can close out of these windows and return to your desktop.



27. On your desktop you should have a My Computer Icon. Right Click on My computer and go to properties. Next go to Network Identification and Select Properties.



28. In here you Select the Computer name that will Identify it on the network and also select your Workgroup name which needs to be identical on all the PC's that are connected. (It is case sensitive)



29. You are now finished and you should restart. When the computer Boots it might ask for you to put in a password. In order for your network to connect correctly, you will need to have a User name and password for it. If you hit cancel, then you will not correctly be logged onto the network.

30. Now you will need to repeat these steps on the Other PC's.

Note: These instruction are written for the software off our website. If any other the installation does not correctly, it is recommend that you download the current drivers.